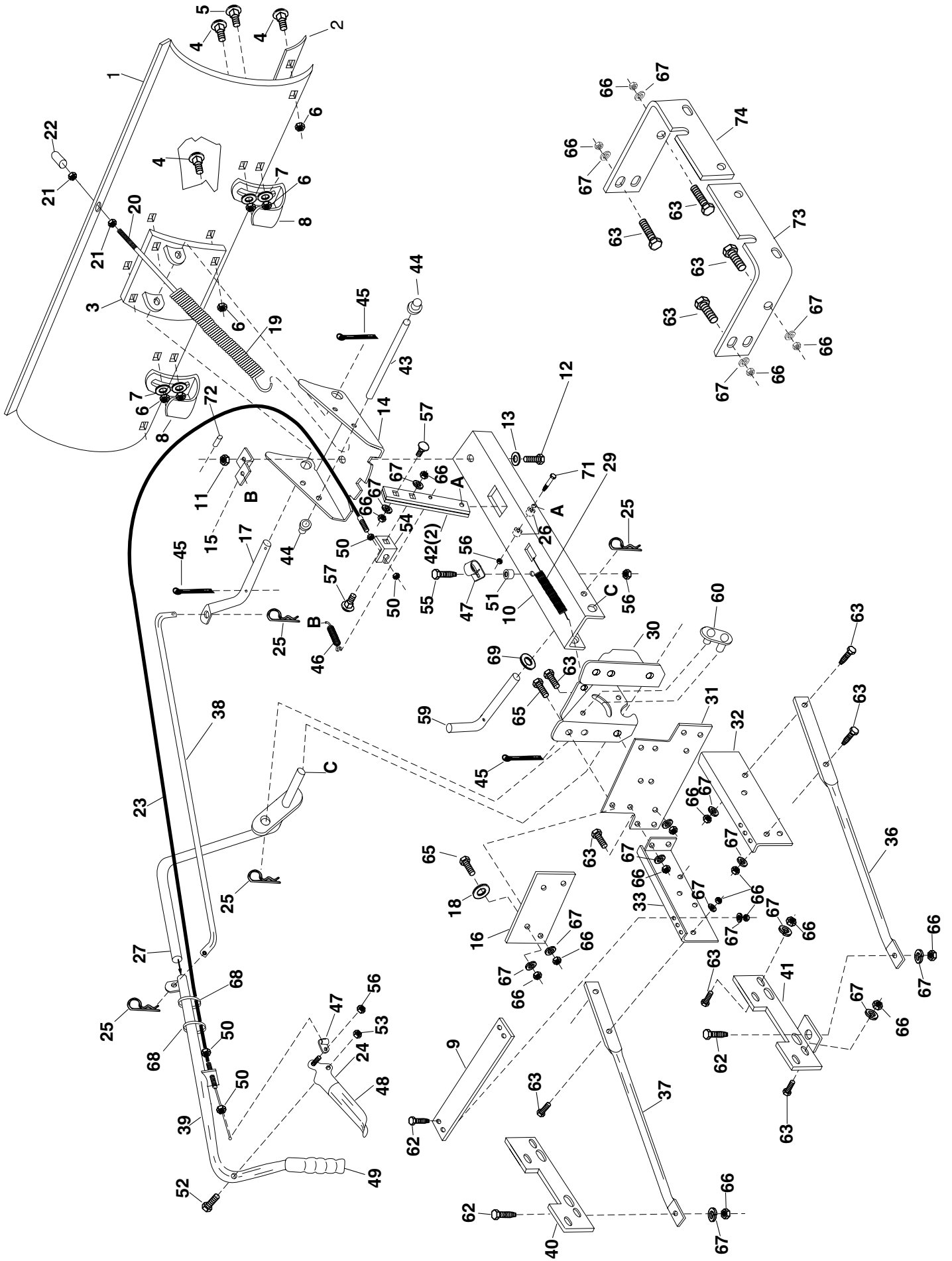


REPAIR PARTS FOR MODEL LBD48C - 48" SNOW BLADE



REPAIR PARTS LIST FOR MODEL LBD48C - 48" SNOW BLADE

REF. NO.	PART NO.	QTY.	DESCRIPTION	REF. NO.	PART NO.	QTY.	DESCRIPTION
1	23955	1	Blade 48"	38	46049	1	Rod, Blade Pivot
2	23956	1	Wear Plate 48"	39	62972	1	Ass'y Lift Handle Tube
3	62980	1	Reinforcement Plate Ass'y	40	23967	1	Bracket, Brace Mount (rear) (LH)
4	43080	10	Bolt, Carriage 5/16-18 x 3/4"	41	23968	1	Bracket, Brace Mount (rear) (RH)
5	43079	2	Bolt, Carriage 5/16-18 x 1"	42	23151	2	Angle Lock Bar
6	43064	11	Nut, Hex Lock 5/16-18	43	23856	1	Spring Mount Rod
7	43081	4	Washer, 5/16"	44	44917	2	Palnut, 3/8"
8	23070	2	Skid Shoe	45	43010	3	Cotter Pin 1/8" x 1-1/4"
9	23970	1	Brace, Cross	46	43348	1	Angle Lock Spring
10	62970	1	Ass'y channel Sub	47	746-0260	2	Cable End Fitting
11	43262	1	Nut, Hex Lock 1/2-13	48	731-0869	1	Grip, Plastic
12	23131	1	Bolt, Special Pivot	49	7071	1	Handle, Grip 3/4"
13	43352	1	Washer, Flat 7/16"	50	712-0256	4	Hex Jam Nut 5/16 Thread
14	23958	1	Plate, Pivot 7 Ga.	51	23658	1	Spacer, 9/16" O.D. x 5/8" Lg.
15	23130	1	Bracket, Spring Mt.	52	43085	1	Hex Bolt, 5/16-18 x 1-1/2"
16	23966	1	Bracket, Pivot Plate	53	43064	1	Hex Lock Nut 5/16-18 Thread
17	46066	1	Shaft, Blade Pivot	54	05762	1	Cable Mount Bracket
18	43070	2	Washer 3/8" STD.	55	1509-90	1	Hex Bolt 1/4-20 x 1-1/4"
19	9466R	1	Spring, Blade Adjust	56	43013	3	Hex Lock Nut 1/4-20 Thread
20	44071	1	Bolt, Hex 3/8-16 x 3-1/2"	57	710-0305	2	Carriage Bolt 3/8-16 x 1-1/4"
21	43015	2	Nut, Hex 3/8-16	59	46065	1	Channel Pivot Pin
22	44074	1	Plastic Cap	60	63034	1	Lift Link Ass'y
23	746-0366	1	Control Cable Ass'y	62	43407	6	Bolt, Hex 3/8-16 x 3/4"
24	62561	1	Release Grip Ass'y	63	43001	18	Hex Bolt 3/8-16 x 1"
25	43055	4	Pin, Hairpin Small 3/32"	65	43087	4	Hex Bolt 3/8-16 x 1-1/4"
26	46053	2	Spacer, 9/16" O.D. x 1" Lg.	66	43082	30	Hex Lock Nut 3/8-16 Thread
27	63033	1	Lift Handle Rod Ass'y	67	43003	30	Lock Washer 3/8"
29	732-0153	1	Extension Spring	68	726-0178	2	Plastic Tie
30	24023	1	Pivot Support Bracket	69	R19171616	1	Washer
31	23960	1	Plate, Pivot Support	71	46071	1	Bolt, Hex 1/4-20 x 3-1/4" Lg. Gr. 5
32	23962	1	Frame Pivot Support (RH)	72	43349	1	1/4" x 1" Spring Pin
33	23961	1	Frame Pivot Support (LH)	73	24164	1	Bracket, Frame Reinforcement, R.H.
36	46048	1	Brace, Tube (RH)	74	24165	1	Bracket, Frame Reinforcement, L.H.
37	46047	1	Brace Tube (LH)		46864	1	Owners Manual