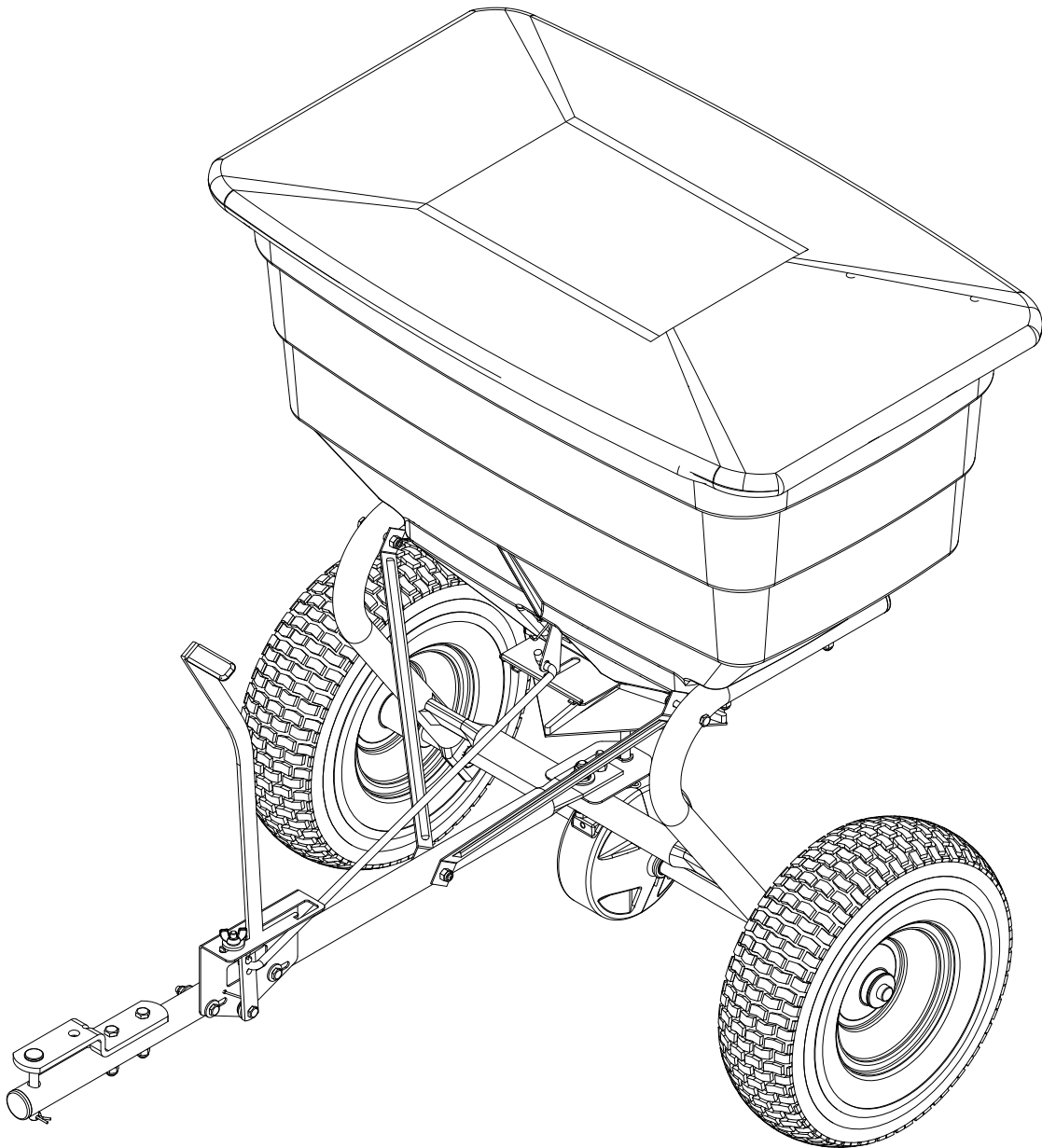


SKU #1600535

MODEL # 45-0547-131

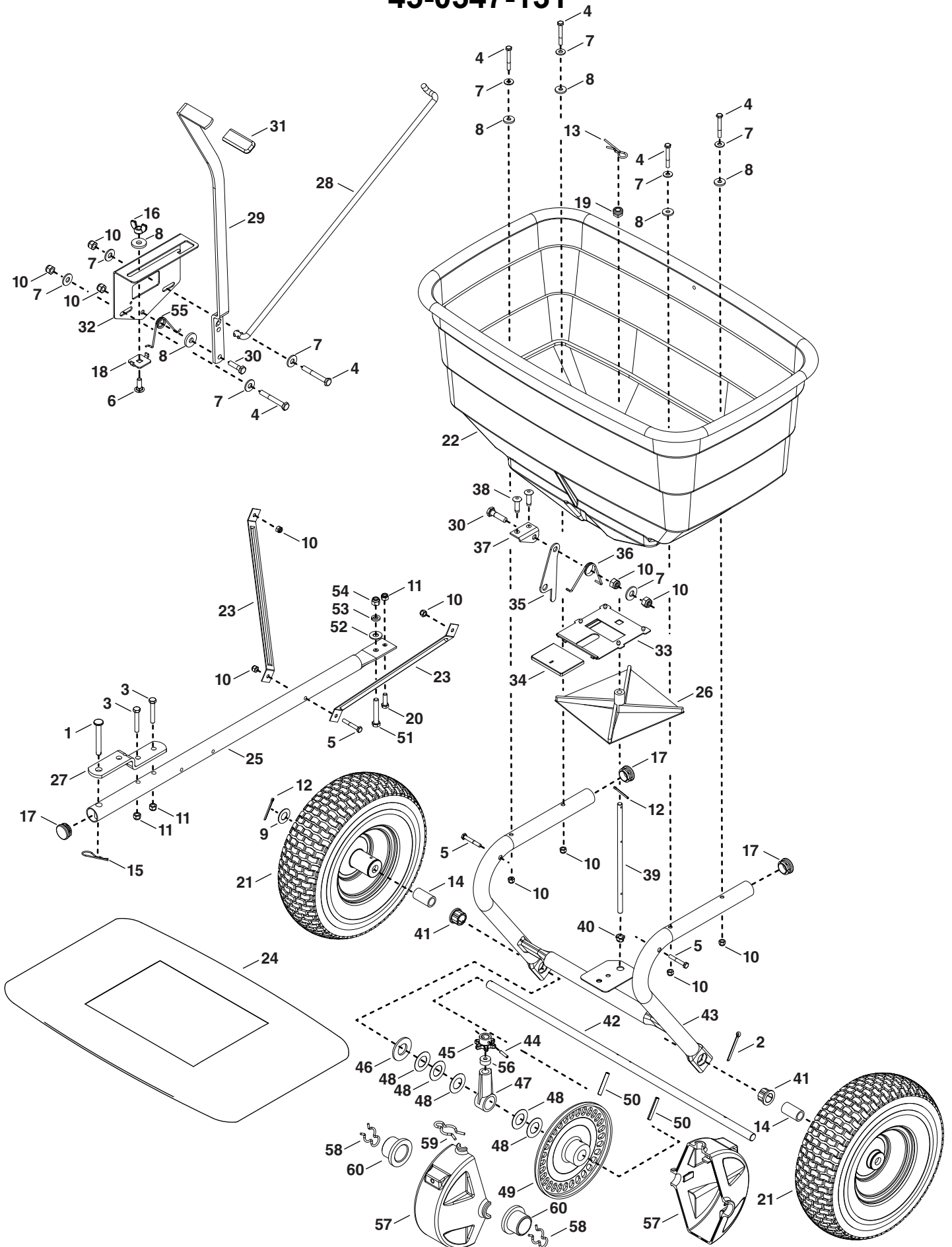


200 LB. Tow Spreader

Distributed by:
TRACTOR SUPPLY COMPANY
5401 VIRGINIA WAY, BRENTWOOD, TN 37027
For customer support, call: 1-888-376-9601
www.tractorsupply.com

FORM NO. 3-39 (10/20/2020)

45-0547-131



REF	QTY	PART NO	DESCRIPTION	REF	QTY	PART NO	DESCRIPTION
1	1	47623	PIN, HITCH 3/8 X 3	32	1	27322BL1	FLOW CONTROL MOUNT
2	1	46855	PIN, COTTER 3/16 X 2	33	1	62482	GUIDE CLOSURE
3	2	44180	BOLT, HEX 5/16-18 X 2	34	1	23533	PLATE, CLOSURE
4	6	46699	BOLT, HEX 1/4-20 X 2	35	1	23758	BRACKET, SLIDE GATE
5	3	1509-69	BOLT, HEX 1/4-20 X 1-3/4	36	1	44566	SPRING, TORSION
6	1	44950	BOLT, CARR .25-20 X .75	37	1	23753	ANGLE BRACKET
7	9	43088	WASHER, .312 X .734 X .065	38	2	C-9M5732	RIVET
8	6	1543-69	WASHER, NYLON .328 X .75 X .9	39	1	25305	SPREADER SHAFT
9	1	R19212016	WASHER, .656 X 1.25 X .059	40	1	42839	BUSHING, 3/8" PLASTIC
10	12	47189	NUT, HEX 1/4-20 NYLOC	41	2	45751	BEARING, FLANGE
11	3	47810	NUT, HEX .312-18 NYLOC	42	1	28640	AXLE SHAFT
12	2	43093	PIN, COTTER 1/8 X 1-1/2	43	1	68880GY1	TUBE FRAME
13	1	48934	HAIRPIN, AGITATOR	44	1	43850	PIN, ROLL 1/8 X 5/8
14	2	45750	SPACER, PLASTIC EXTRUSION	45	1	44468	SPROCKET
15	1	43343	PIN, HAIR COTTER 3/32	46	1	R19212113	WASHER, .656 X 1.312 X .095
16	1	47141	NUT, WING 1/4-20 NYLON	47	1	45753	BUSHING, AXLE/SHAFT
17	3	47674	PLUG, 1-1/4" OD TUBE	48	5	44125	WASHER, .625 X 1 X .03
18	1	24858	STOP, FLOW CONTROL	49	1	64735	GEAR 5/8" ID
19	1	44285	BUSHING, DELRIN 3/8	50	2	44665	PIN, ROLL 3/16 X 1-1/4
20	1	43063	BOLT, HEX .312 X 1	51	1	HA180132	BOLT, HEX 3/8-16 X 2-1/4
21	2	45825G	WHEEL, 13 X 5.00-6	52	1	43070	WASHER, .438 X 1 X .083
22	1	44480	HOPPER	53	1	43003	WASHER, LOC 3/8
23	2	23525GY1	BRACE, HITCH	54	1	HA21362	NUT, HEX 3/8-16 NYLOC
24	1	40825	HOPPER COVER	55	1	42347	SPRING, TORSION
25	1	45797GY1	HITCH TUBE	56	1	23625	SPACER
26	1	04367	SPREADER IMPELLER	57	2	42497	HOUSING, TRANSMISSION
27	1	23687BL1	HITCH BRACKET	58	2	49897	CLIP, HAIRPIN 7/8
28	1	41549	FLOW CONTROL ROD	59	1	49898	CLIP, HAIRPIN 5/8
29	1	27314BL3	ARM, FLOW CONTROL	60	2	741-0249	BEARING, FLANGED
30	2	43661	BOLT, HEX .25-20 X 1		1	3-39	OWNERS MANUAL
31	1	43848	GRIP				

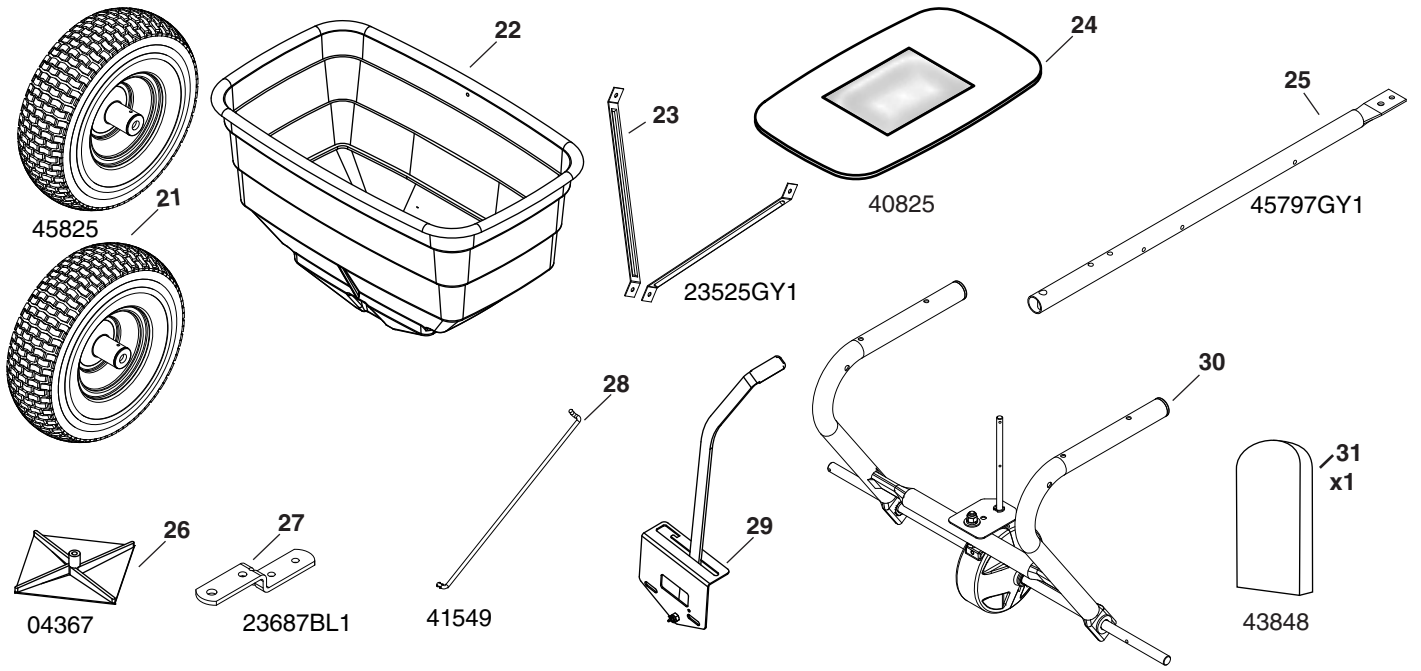
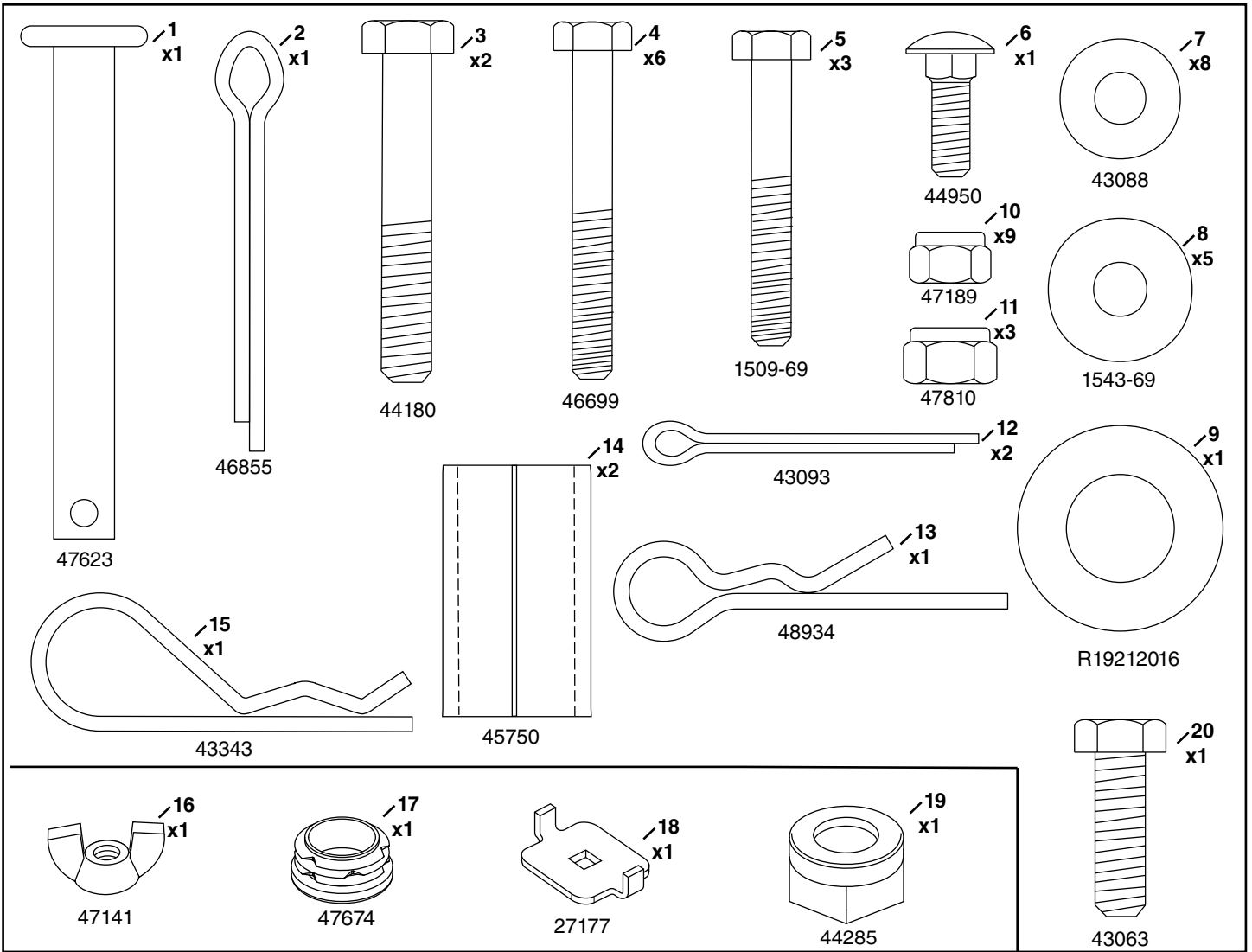


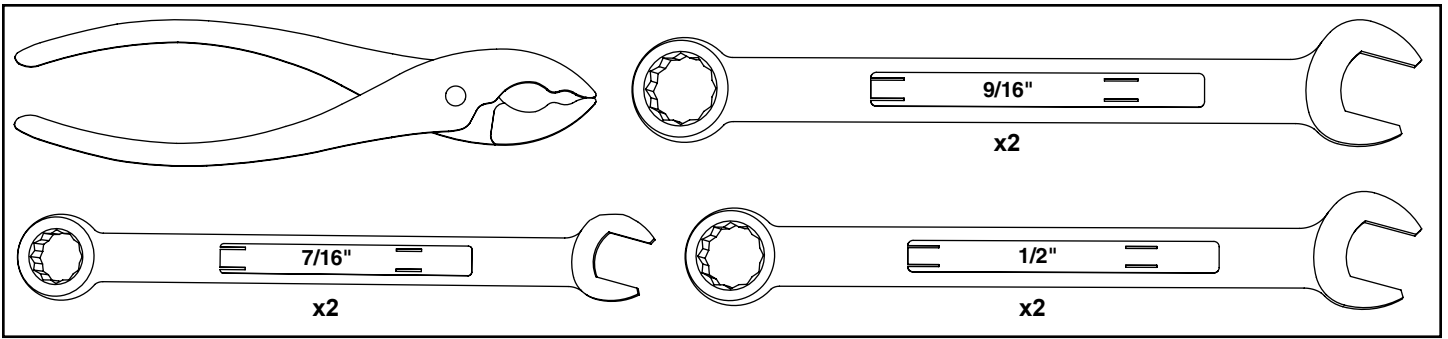
Look for this symbol to point out important safety precautions. It means — **ATTENTION!** Become alert! Your safety is involved.



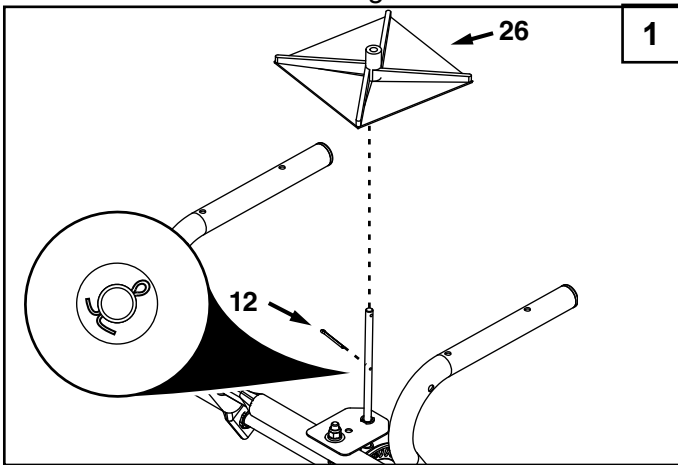
CAUTION: vehicle braking and stability may be affected with the addition of an accessory or an attachment. Be aware of changing conditions on slopes.

- Read the towing vehicle owners manual and towing vehicle safety rules. Know how to operate your tractor before using the broadcast spreader attachment.
- Read the chemical label instructions and cautions for handling and applying the chemicals purchased for spreading.
- Wear eye and hand protection when handling and when applying lawn or garden chemicals.
- Never operate tractor and spreader attachment without wearing substantial footwear, and do not allow anyone to ride or sit on spreader attachment frame.
- Never allow children to operate the tractor or spreader attachment, and do not allow adults to operate without proper instructions.
- Always begin with the transmission in first (low) gear and with the engine at low speed, and gradually increase speed as conditions permit.
- When towing broadcast spreader do not drive too close to a creek or ditch and be alert for holes and other hazards which could cause you to lose control of the broadcast spreader and tractor.
- Before operating vehicle on any grade (hill) refer to the safety rules in the vehicle owner's manual concerning safe operation on slopes. Stay off steep slopes!
- Follow maintenance and lubrication instructions as outlined in this manual.

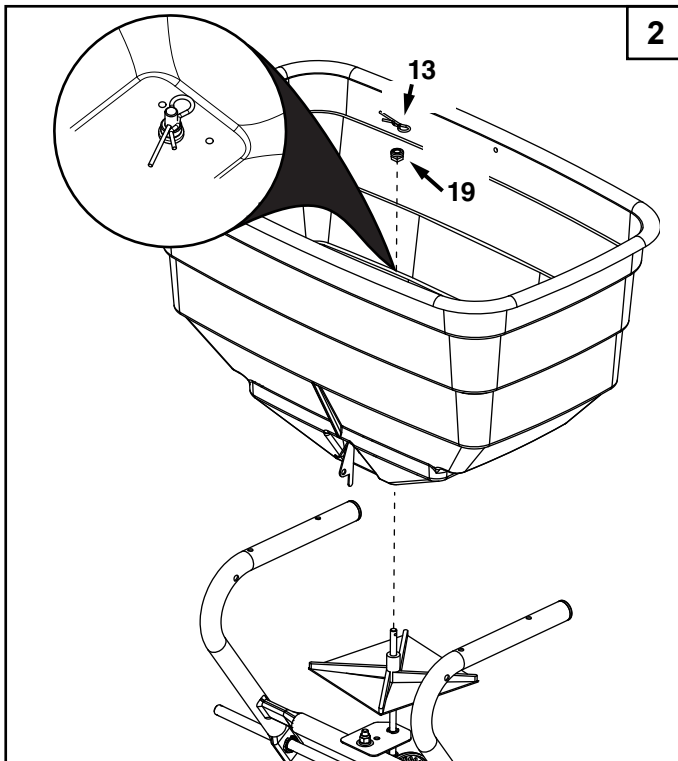




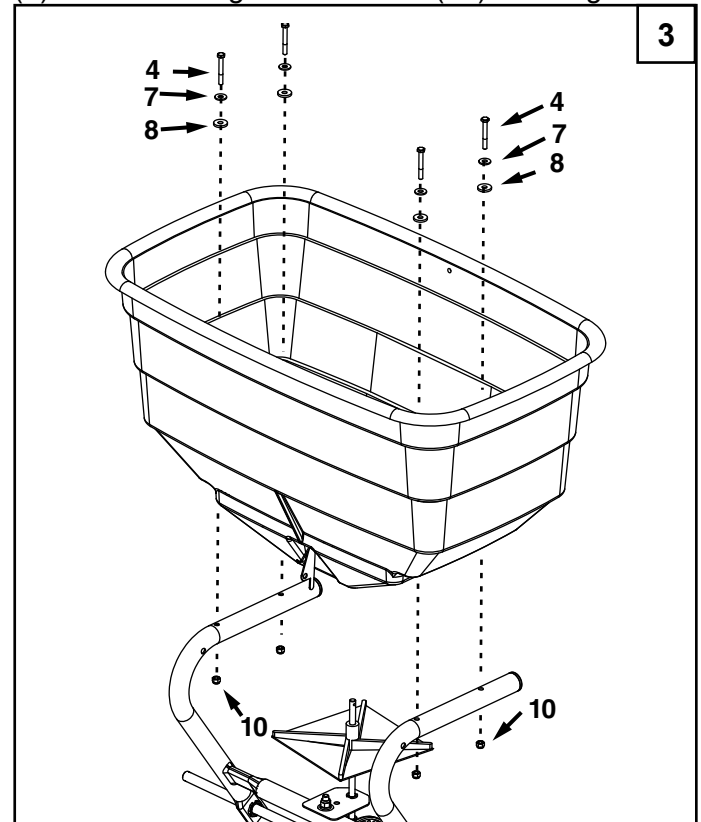
Attach the impeller (26) to the impeller shaft using a small cotter pin (12) and bending the ends around the shaft to secure it. See figure 1.



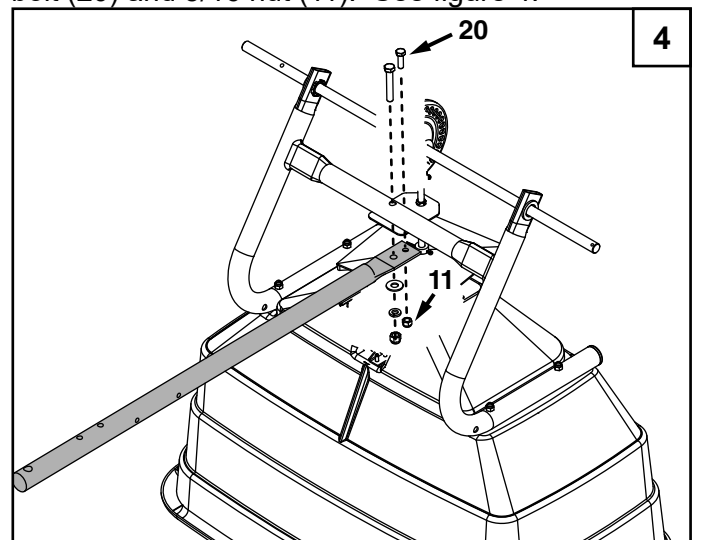
Attach the hopper to the impeller shaft using a delrin bushing (19) and a hairpin agitator (13). See figure 2.



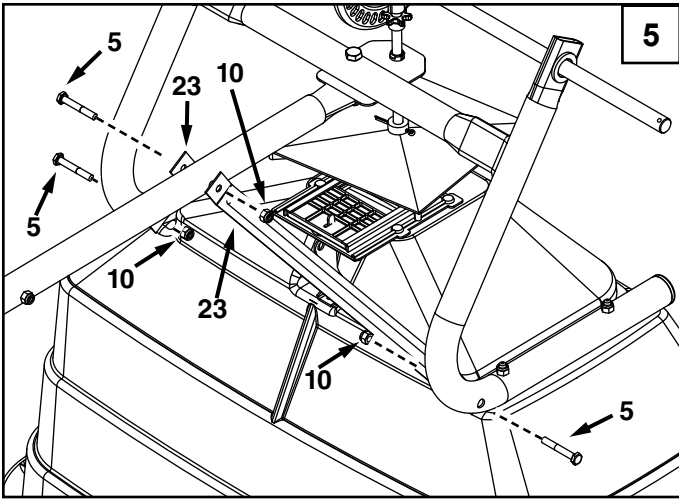
Attach the hopper to the frame assembly using four nylon washers (8), washers (7), and 1/4" X 2" bolts (4). Secure using four 1/4" nuts (10). See figure 3.



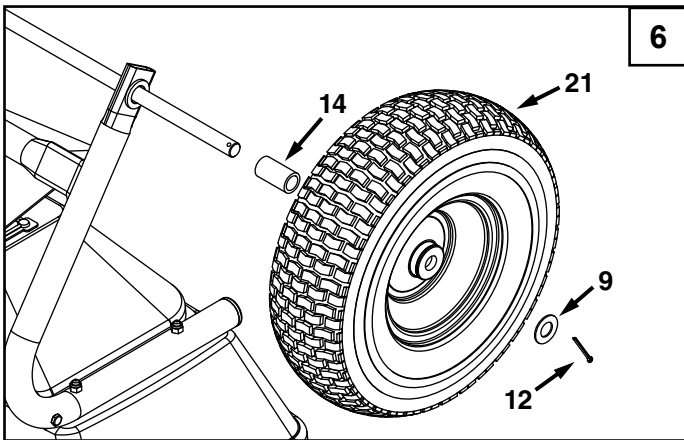
Turn the assembly over and attach the hitch tube using the pre assembled hardware and a 5/16" X 1" bolt (20) and 5/16 nut (11). See figure 4.



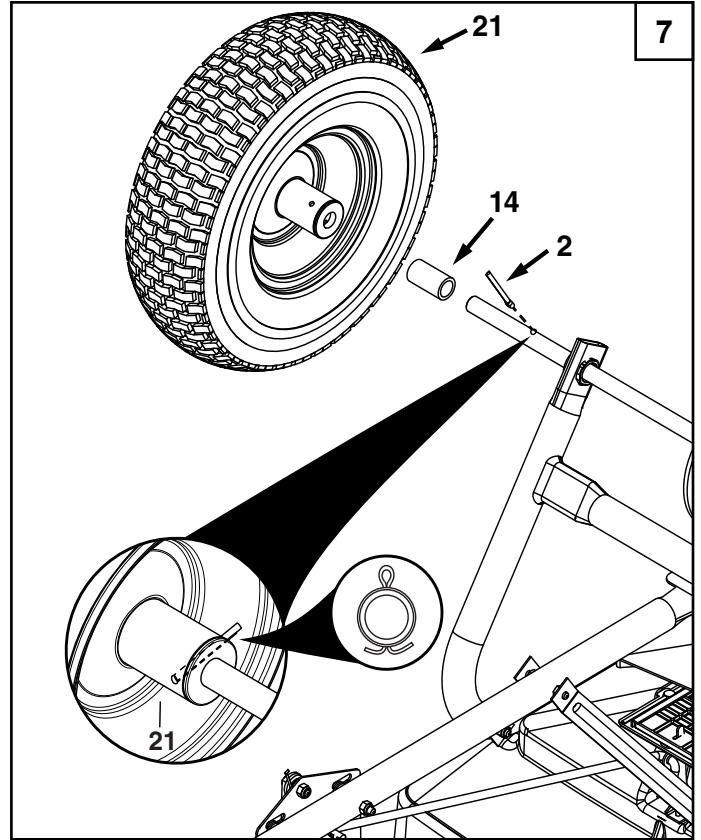
Attach the hitch braces to the frame using two 1/4" X 1-3/4" bolts (5) and 1/4" nuts (10). Attach the hitch braces to the hitch tube using one 1/4" X 1-3/4" bolt (5) and 1/4" nut (10). See figure 5.



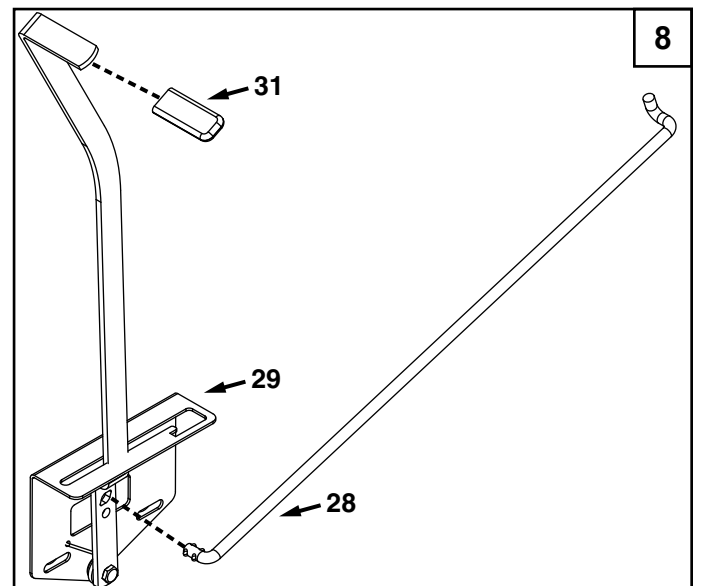
Attach a wheel to the right side of the axle by sliding a spacer (14) onto the axle, followed by a wheel (21) and a large washer (9). Secure using a small cotter pin (12) through the hole at the end of the axle. Bend the ends of the cotter pin around the axle. See figure 6.



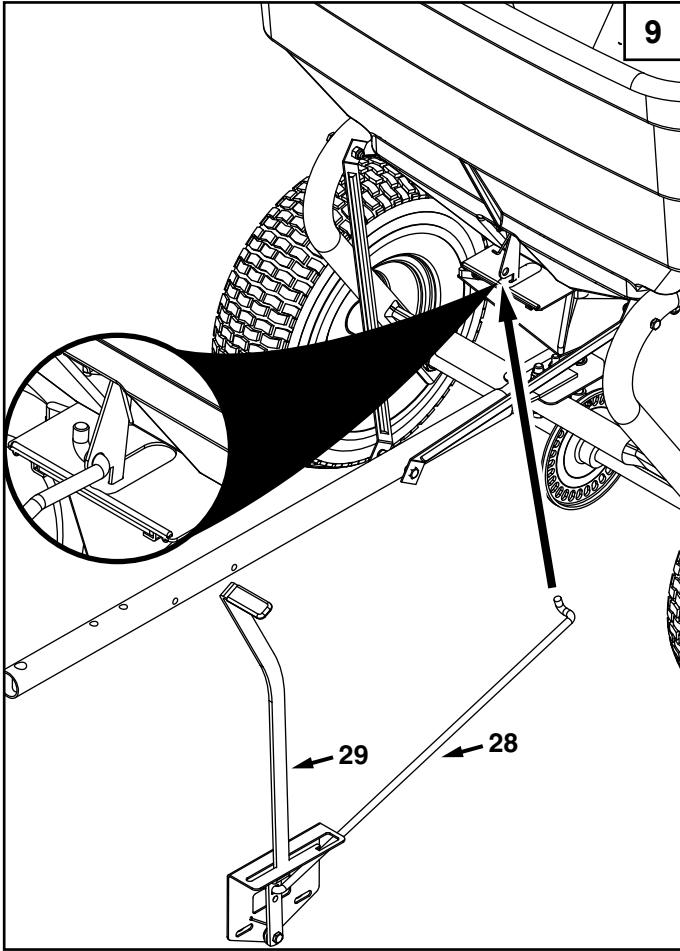
Attach a wheel to the left side of the axle by sliding a spacer (14) onto the axle, followed by a wheel (21). Secure the wheel to the axle using a large cotter pin (2) through the wheel and through the hole in the shaft. Bend the ends of the cotter pin to secure it. See figure 7.



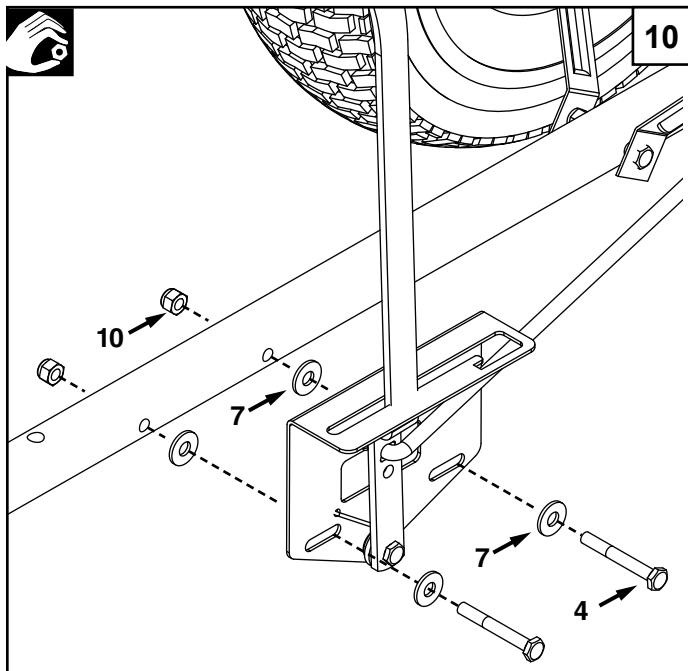
Attach the grip (31) to the flow control arm. Attach the flow control rod (28) to the flow control assembly (29). See figure 8.



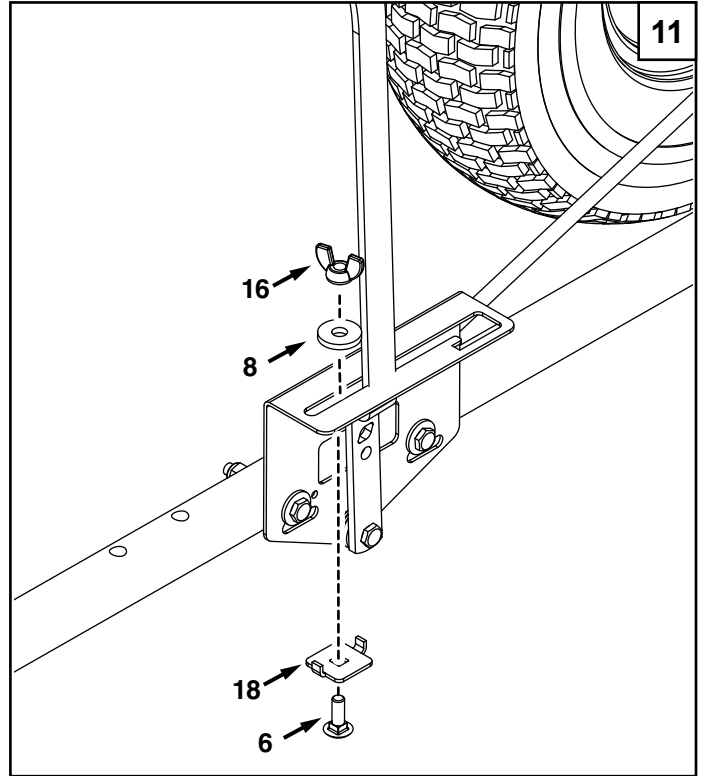
Attach the other end of the flow control rod (28) to the slide gate bracket by sliding it through the hole. See figure 9.



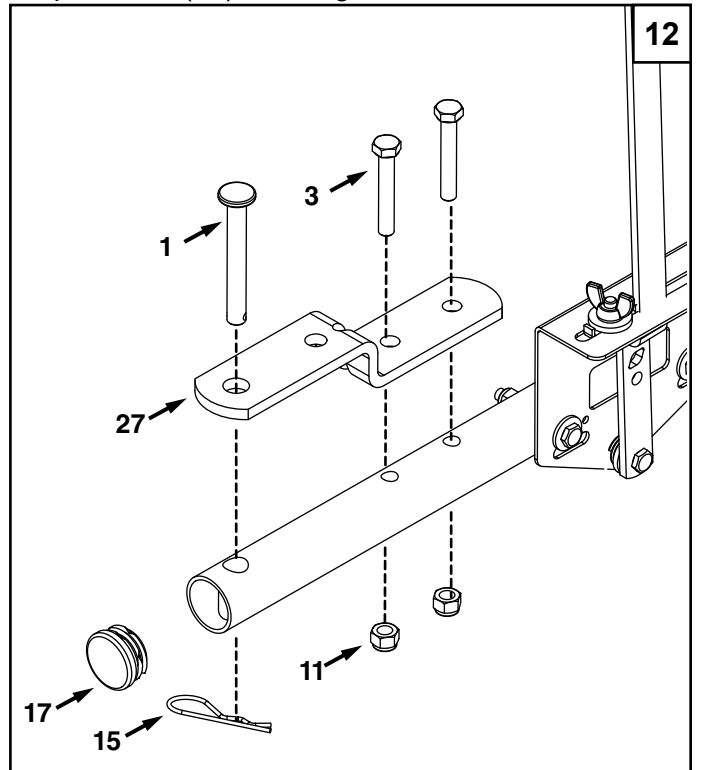
Attach the flow control assembly to the hitch tube using two 1/4" X 2" bolts (4), washers (7), two more washers (7) and secure with two 1/4" nuts (10). See figure 10.

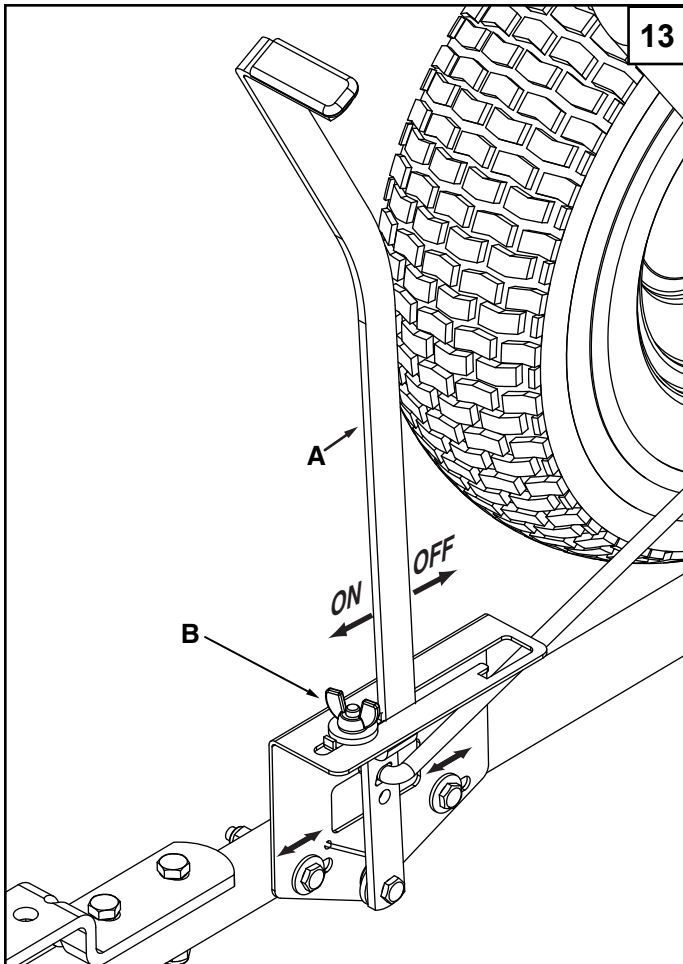


Install the adjustable stop using a carriage bolt (6), flow control stop (18), nylon washer (8), and secure with a wingnut (16). See figure 11.



Insert the tube plug (17) into the end of the hitch tube. Attach the hitch bracket to the hitch tube using two 5/16 X 2" bolts (3) and 5/16 nuts (11). Secure the hitch pin (1) through the hitch bracket using the hairpin cotter (15). See figure 12.





OPERATION

Do not use powdered lawn chemicals. They do not give a satisfactory or consistent broadcast pattern.

1. Estimate the size of the area to be covered and calculate the amount of material required.
2. Set the adjustable stop according to the flow setting recommended in the application chart on this page. Also refer to the instructions on the packaging for the material to be spread.
3. The application chart is calculated for light to heavy coverage at a vehicle speed of 3 mph, or 100 ft. in 23 seconds.
4. Make sure the control lever is in the "OFF" position.
5. Fill the hopper, breaking up any lumpy fertilizer.
6. Start the spreader in motion and then pull the control lever forward against the adjustable stop to the "ON" position.
7. Always move the control lever to the "OFF" position before turning or stopping.
8. To ensure uniform coverage, make each pass so that the broadcast pattern slightly overlaps the pattern from the previous pass. The approximate broadcast widths for different materials are shown in the application chart on this page.
9. For rectangular areas, make two passes across the short ends to create turning areas. For non-rectangular areas, make two passes around the entire border.
10. When broadcasting weed control fertilizers, make sure the broadcast pattern does not hit evergreen trees, flowers or shrubs.

WARNING: Over-inflated tires can explode, causing serious injury. To avoid injury, NEVER inflate tires beyond the maximum pressure printed on the sidewall of the tire. ALWAYS use a hand pump to safely inflate tires.



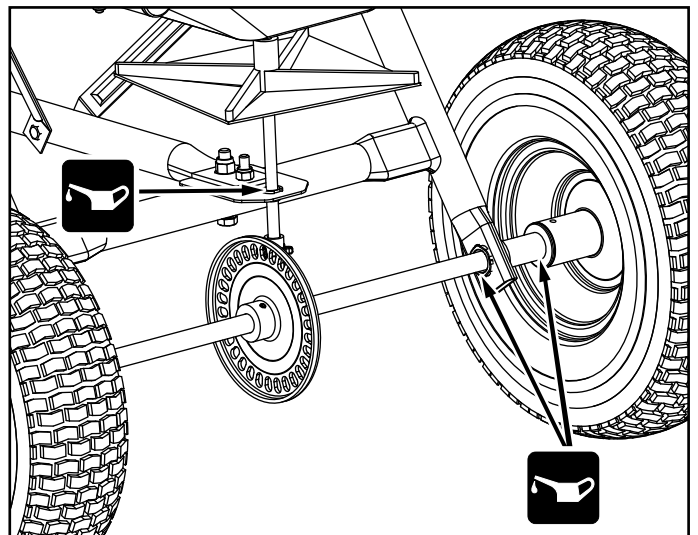
Calibrate the flow control setting.

- Move the control lever (A) to the "OFF" position.
- Slide the control bracket along the control tube until the shut-off plate in the bottom of the hopper is closed.
- Lightly tighten the hex nuts that fasten the flow control bracket to the control tube.
- Set the adjustable stop (B) at "5". Pull the control lever (A) against the stop (B) and verify that the shut-off plate has opened about half way.
- If the shut-off plate does not open half way, adjust the position of the control bracket until the shut-off plate opens about half way and closes completely.
- Tighten the hex nuts.

APPLICATION CHART

TYPE MATERIAL	FLOW SETTING	SPREAD WIDTH
FERTILIZER		
Granular	3 - 5	8' - 10'
Pelleted	3 - 5	10' - 12'
GRASS SEED		
Fine	3 - 4	6' - 7'
Coarse	4 - 5	8' - 9'
ICE MELTER	6 - 8	10' - 12'

MAINTENANCE



OIL ANNUALLY