

CRAFTSMAN®

INSTRUCTION MANUAL

42" SNOW THROWER

COMPATIBLE WITH:

T1, T2, and T3 Series Craftsman Riding Mowers

CMXGZBF71248371







IF YOU HAVE QUESTIONS
OR COMMENTS, CONTACT US.

1-888-331-4569


WWW.CRAFTSMAN.COM

Definitions: Safety Alert Symbols and Words

This instruction manual uses the following safety alert symbols and words to alert you to hazardous situations and your risk of personal injury or property damage.

-  **DANGER:** Indicates an imminently hazardous situation which, if not avoided, **will** result in **death or serious injury**.
-  **WARNING:** Indicates a potentially hazardous situation which, if not avoided, **could** result in **death or serious injury**.
-  **CAUTION:** Indicates a potentially hazardous situation which, if not avoided, **may** result in **minor or moderate injury**.
-  (Used without word) Indicates a safety related message.
- NOTICE:** Indicates a practice **not related to personal injury** which, if not avoided, **may** result in **property damage**.

SAFETY WARNINGS

-  **WARNING:** Read all safety warnings, instructions, illustrations and specifications provided with this tool. Failure to follow all instructions listed below may result in fire and/or serious injury.

SAVE ALL WARNINGS AND INSTRUCTIONS FOR FUTURE REFERENCE

Safety Warnings

- a) Read the tractor and snow blade owner's manuals and know how to operate your tractor before using tractor with snow blade attachment.
- b) Never operate tractor and snow blade without wearing proper clothing suited to weather conditions and operation of controls.
- c) Never allow children to operate tractor and snow blade, and do not allow adults to operate without proper instructions.
- d) Always begin with transmission in first (low) gear and gradually increase speed as conditions permit.



Look for this symbol to point out important safety precautions. It means — **Attention!! Become alert!! Your safety is involved.**



WARNING: Read all safety warnings and all instructions. Failure to follow the warnings and instructions may result in damage or serious injury.



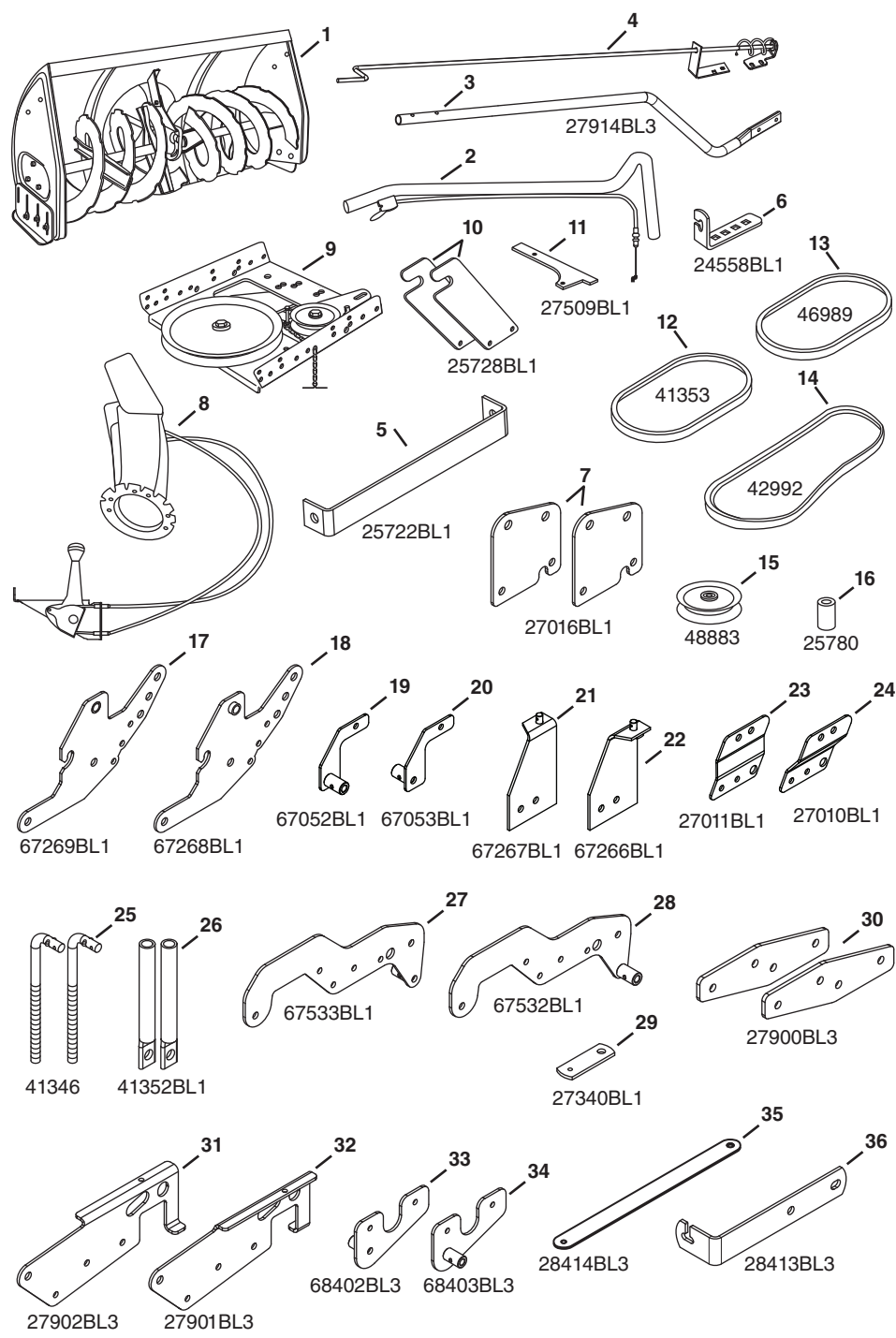
WARNING: Never modify the product or any part of it. Damage or personal injury could result.



WARNING: To reduce the risk of injury, read the instruction manual.

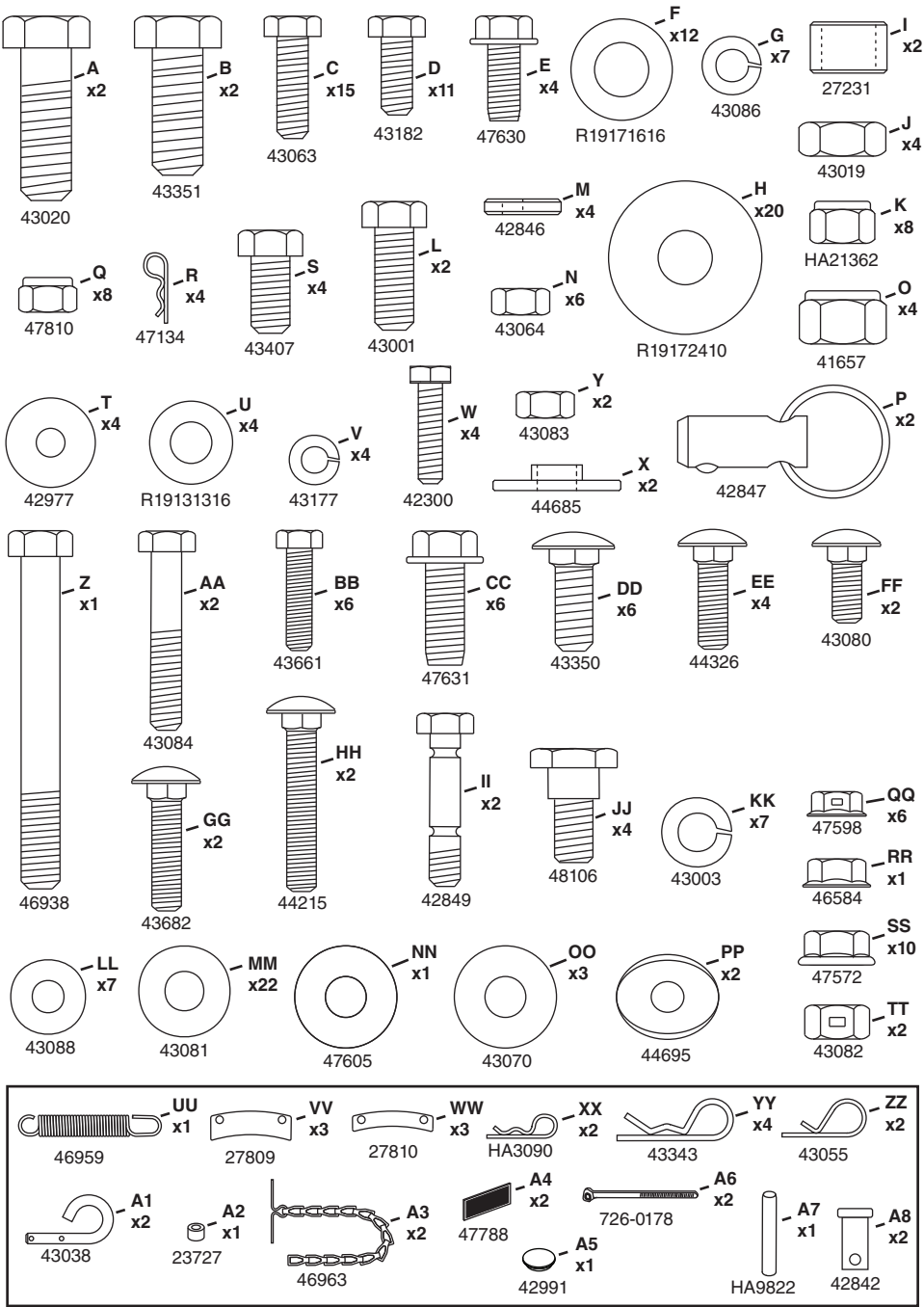
If you have any questions or comments about this or any product, call toll free at: 1-888-331-4569.

CARTON CONTENTS



HARDWARE PACKAGE CONTENTS

NOT SHOWN ACTUAL SIZE

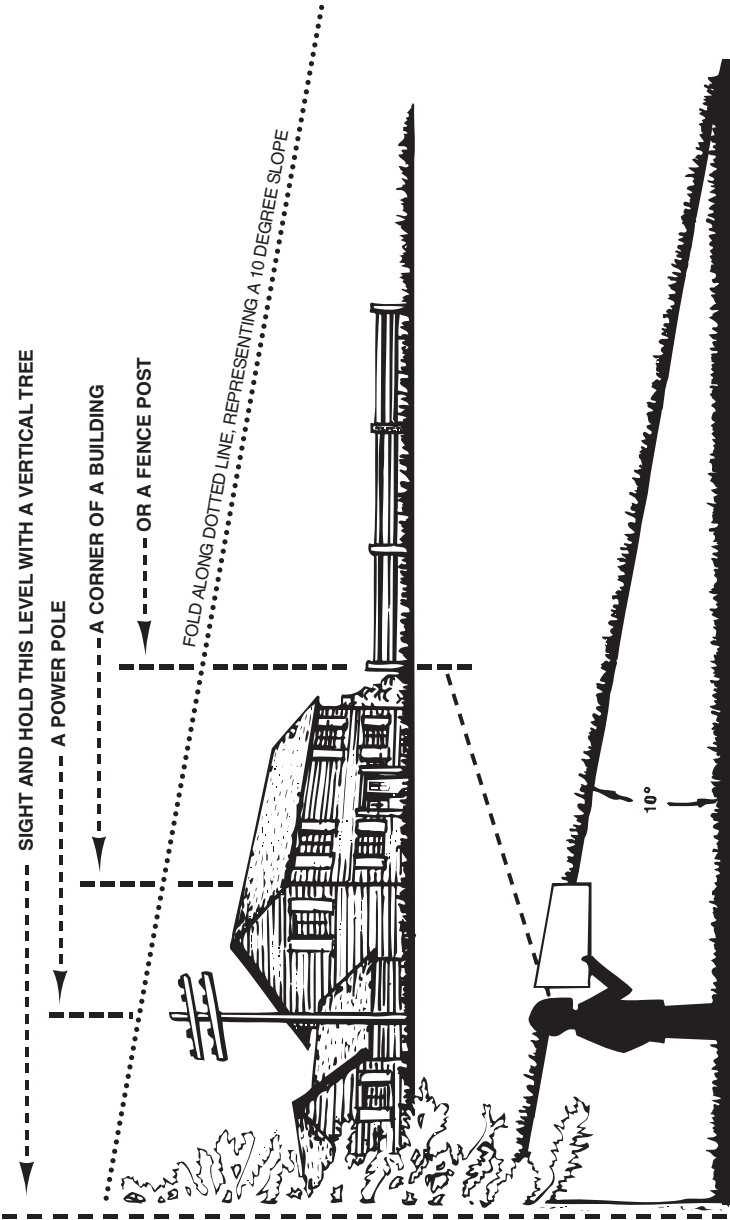


SLOPE GUIDE

(Keep this sheet in a safe place for future reference.)

Attach the chain to the spring on the lower idler arm.

Use this guide to determine if a slope is safe for the operation of your tractor and snow thrower. Refer also to the instructions in your vehicle owners manual.



CAUTION: Do not operate your tractor and snow thrower on a slope in excess of 10 Degrees. Verify your tractor's towing and braking capabilities before operating on a slope. Avoid any sudden turns or maneuvers while on a slope.

COMPATIBLE WITH:

T1, T2, and T3 Series Craftsman Riding Mowers

TOOLS REQUIRED FOR ASSEMBLY

1. (1) Pliers
2. (1) Hammer
3. (2) 7/16" Wrenches
4. (2) 1/2" Wrenches
5. (2) 9/16" Wrenches
6. (2) 3/4" Wrenches
7. (1) Screw Driver
8. (1) Knife
9. General Purpose Grease

REMOVAL OF PARTS FROM CARTON

1. Remove all parts and hardware packages from the carton. Lay out parts and hardware and identify using the illustrations on pages 1 and 2.

NOTE: Not all of the supplied parts and hardware will be needed for your particular tractor. Unneeded items may be discarded after you have completed assembly and checked operation of unit. **DO NOT DISCARD** the two spare shear bolts and 5/16" nylock nuts. Refer to the Service and Adjustments section on page 28 and 29.



CAUTION: Before starting to assemble the snow thrower, remove the spark plug wire(s), set the parking brake and remove the key from the tractor ignition.



CAUTION: Do not begin assembling until the tractor engine, muffler and exhaust deflector have been allowed to cool off.

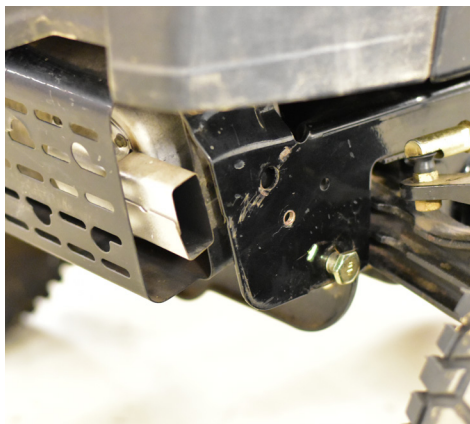
TRACTOR PREPARATION

Before performing these instructions, refer to the Service and Adjustments section of your tractor owner's manual for specific safety instructions.

1. Allow engine, muffler and exhaust deflector to cool before beginning.
2. Remove any front or rear attachment which is mounted to your tractor.
3. Remove the mower deck. Refer to your tractor owner's manual for removal instructions. Mark all loose parts and save for reassembly.
4. Remove the tractor hood. Refer to your tractor owner's manual for removal instructions.

IMPORTANT: Right hand (R.H.) and left hand (L.H.) side of the tractor are determined from the operators position while seated on the tractor.

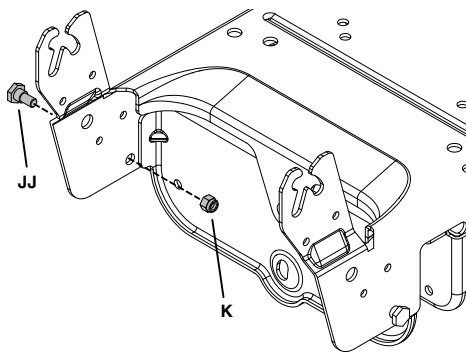
IDENTIFY YOUR TRACTOR: IF YOUR TRACTOR FRAME MATCHES THE STYLE SHOWN BELOW, FOLLOW THESE INSTRUCTIONS.



STEP 1: (Fig. 1)

1. Assemble a shoulder bolt (JJ) and a 3/8" nylock nut (K) to the holes shown on each side of the tractor frame.

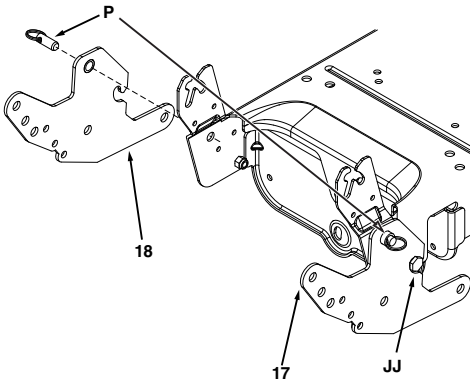
Fig. 1



STEP 2: (Fig. 2)

- 1. Place a side plate (17,18) onto each shoulder bolt (JJ) and install two quick release pins (P) as shown.

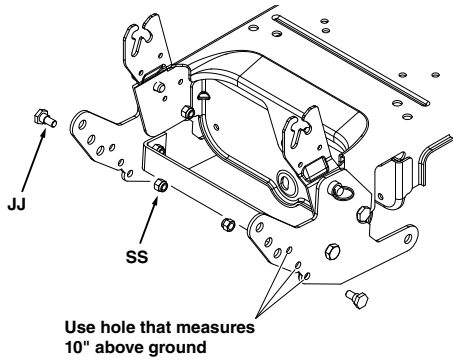
Fig. 2



STEP 4: (Fig. 4)

- 1. Measure from the center of the three holes indicated in figure 4 to select the hole that is approximately 10" above the ground in both front mount plates.
- 2. Install a shoulder bolt (JJ) and 3/8" nylock nut (SS) in the selected hole in each front mount plate.

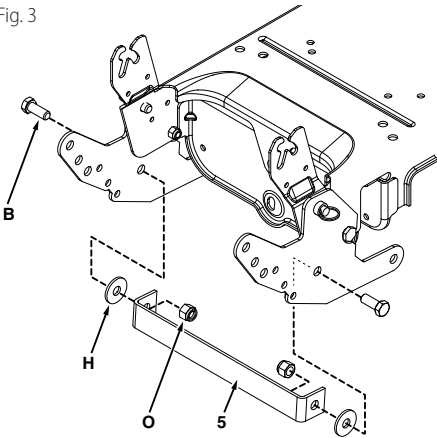
Fig. 4



STEP 3: (Fig. 3)

- 1. Attach the frame brace (5) between the side plates using two 1/2" x 1-1/4" hex bolts (B), 1/2" x 1-1/2" washers (H) and 1/2" nylock nuts (O).

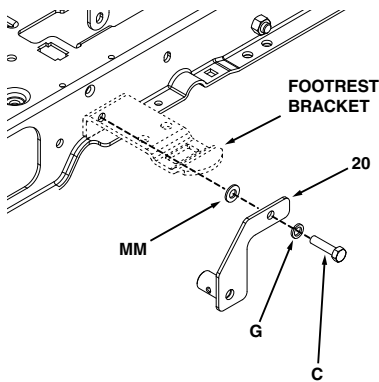
Fig. 3



STEP 5: (Fig. 5)

- 1. Remove the thread forming bolt from the hole in the footrest bracket on the left side of the tractor frame.
- 2. Attach the L.H. hanger bracket (20) to the empty hole using a 5/16" x 1" hex bolt (C), a 5/16" lock washer (G), and a 5/16" flat washer (MM). Place the flat washer between the hanger bracket and the footrest bracket.
- 3. Repeat on the right side of the tractor frame using the the R.H. hanger bracket (19).

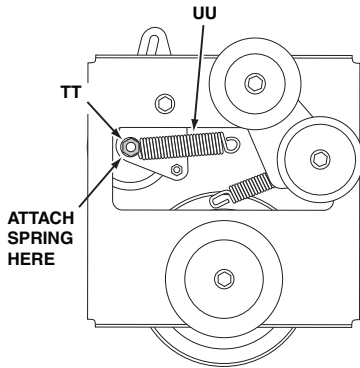
Fig. 5



STEP 6: (Fig. 6)

- 1. Turn the clutch idler assembly upside down.
- 2. Attach the spring to the bottom of the upper idler arm. Hook the spring onto the bolt that extends through the nut on the bottom of the upper idler arm and then install a 3/8" hex lock nut (TT) onto the bolt. Leave enough space for the spring to pivot.

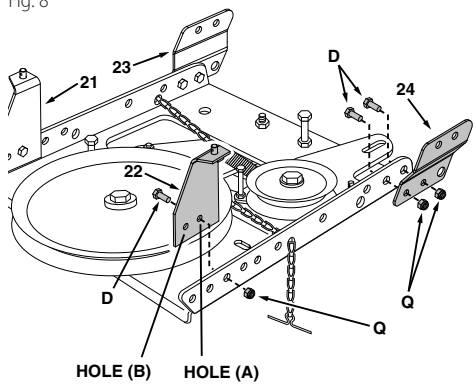
Fig. 6



STEP 8: (Fig. 8)

- 1. Refer back to step 4. If you used the top hole indicated in step 4, use hole A in this step. If you used one of the two lower holes, use hole B in this step.
- 2. Attach the R.H. (21) and L.H. (22) rear frame brackets on the **inside** to either hole A or B using one 5/16" x 3/4" hex bolt (D) and 5/16" nylock nut (Q) for each bracket. **Do not tighten yet.**
- 3. Assemble the R.H. (23) and L.H. (24) front frame brackets on the **outside** using two 5/16" x 3/4" hex bolts (D) and 5/16" nylock nuts (Q) for each bracket.

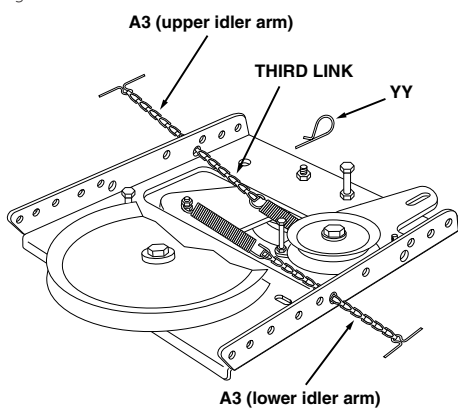
Fig. 8



STEP 7: (Fig. 7)

- 1. Insert tensioning chains (A3) through the holes shown and attach to the springs on the upper and lower idler arms.
- 2. Attach a 3/32" hairpin cotter (YY) to the chain attached to the upper idler arm, placing it in the third link from the spring.

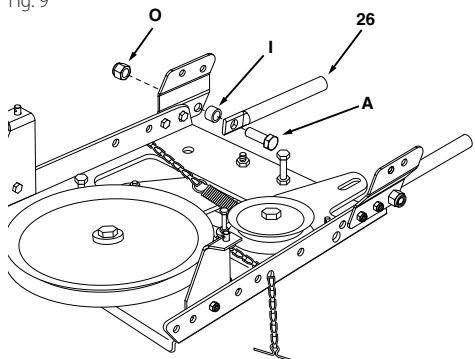
Fig. 7



STEP 9: (Fig. 9)

- 1. Assemble the two support tubes (26) to the inside of each front frame bracket using a 1/2" x 1-1/2" hex bolt (A), a 1/2" spacer (I) and a 1/2" nylock nut (O) for each bracket. Do not tighten yet.

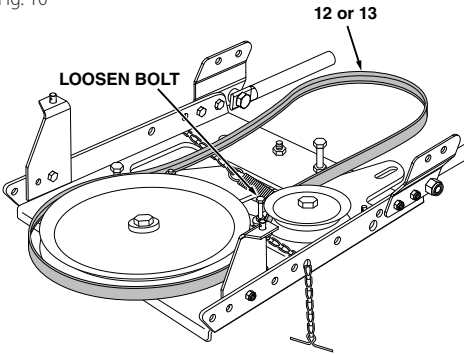
Fig. 9



STEP 10: (Fig. 10)

1. Two drive belts are supplied with the snow thrower. If you used hole A in step 8, use the 52" drive belt (12). If you used hole B, use the 55" drive belt (13).
2. Slightly loosen the hex bolt next to the flat idler pulley. Install the drive belt between the hex bolt and the flat idler pulley with the flat side of the belt against the pulley. Retighten the hex bolt.
3. Loop the belt around the large v-pulley, placing it between the pulley and the hex bolt next to the pulley.

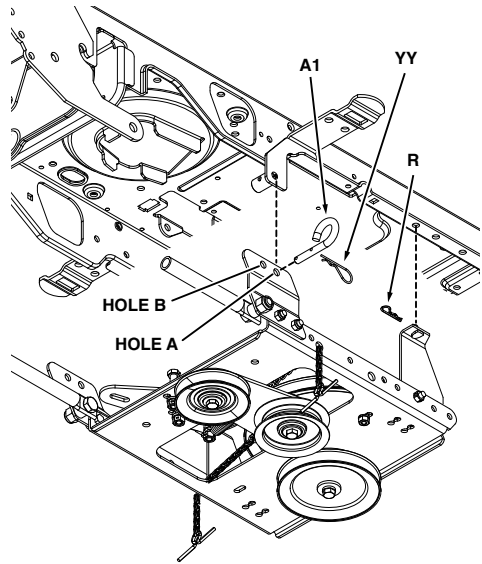
Fig. 10



STEP 12: (Fig. 12)

1. Attach the front frame brackets to the two hanger brackets on the tractor frame using two pivot lock pins (A1) and 1/8" hairpin cotters (YY).
2. Attach the rear frame brackets to the bottom of the tractor frame using two small 5/64" hairpin cotters (R).

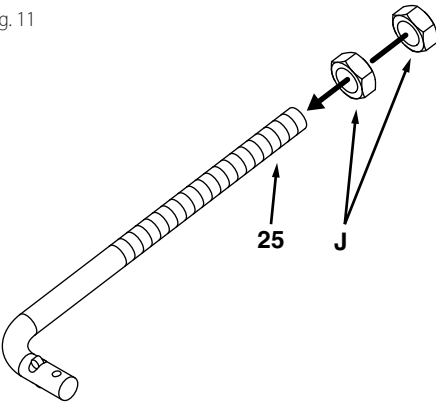
Fig. 12



STEP 11: (Fig. 11)

1. Assemble two 1/2" jam nuts (J) all the way onto the threads of each support link (25).

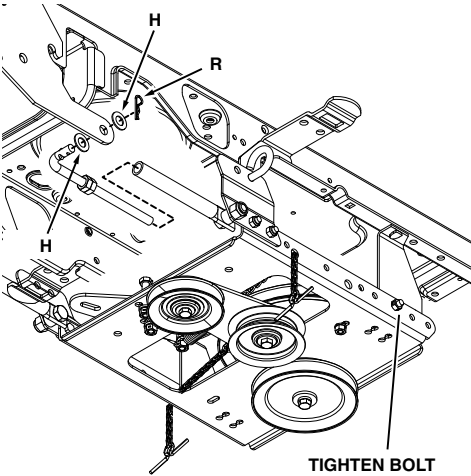
Fig. 11



STEP 13: (Fig. 13)

1. Assemble a 1/2" x 1" (H) washer onto the bent end of a support link and then insert the threaded end into a support tube and the bent end into the rear hole in a front mounting plate, Assemble another 1/2" x 1" (H) washer onto the end of the link and secure it with a small 5/64" hairpin cotter (R). Repeat for the other support link.
2. Tighten the bolt and nut in each rear frame bracket.
3. Tighten the bolt and nut in each support link.
4. Tighten the jam nuts so that all looseness is eliminated from the support links and support tubes.

Fig. 13



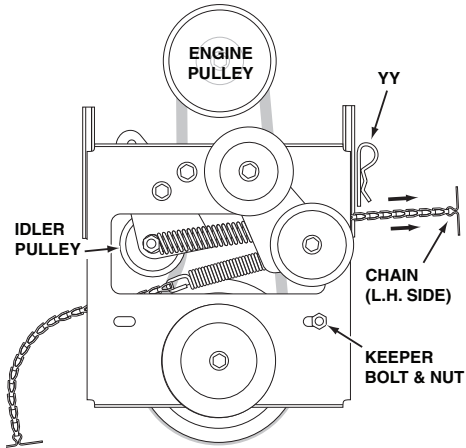
STEP 14: (Fig. 14)

1. Remove the belt guard for the PTO pulley on the tractor. Refer to "Cutting Deck Removal" in the SERVICE AND MAINTENANCE section of your tractor Operator's Manual.
2. Install the drive belt onto the tractor's PTO pulley. You may need to temporarily lift the belt from the large pulley on the clutch idler assembly.
3. Reinstall the belt guard for the tractor's PTO pulley. Be sure the belt guard is installed in the notch on the side of the tractor's electric clutch.
4. Place tension on the belt by pulling the left side tensioning chain out as far as the 3/32" hairpin cotter (XX) will allow. Secure the chain in this position by inserting a 1/8" hairpin cotter (YY) through the chain.



DO NOT start the engine until the PTO pulley belt guard has been reinstalled. The tractor's electric clutch could be damaged.

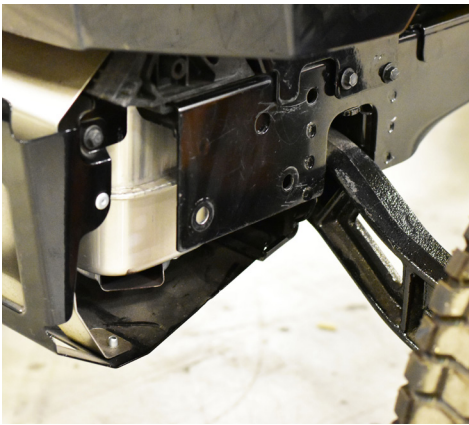
Fig. 14



VIEWED FROM UNDERNEATH

**GO TO ASSEMBLY OF SNOW THROWER
SECTION ON PAGE 21.**

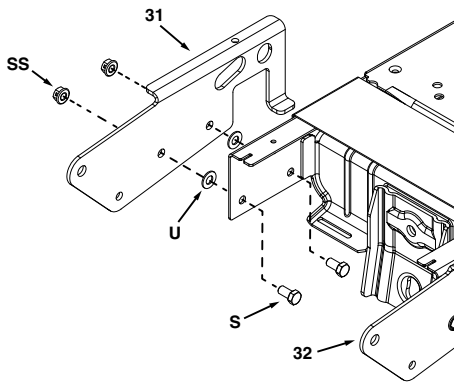
IDENTIFY YOUR TRACTOR: IF YOUR TRACTOR FRAME MATCHES THE STYLE SHOWN BELOW, FOLLOW THESE INSTRUCTIONS.



STEP 1: (Fig. 15)

1. Remove the bolt holding on the front frame strap.
2. Attach the R.H. front mounting plate (31) to the tractor frame using two 3/8 x 3/4" hex bolts (S), 3/8" washers (U), and 3/8" flange nuts (SS).
3. Repeat for L.H. front mounting plate (32).

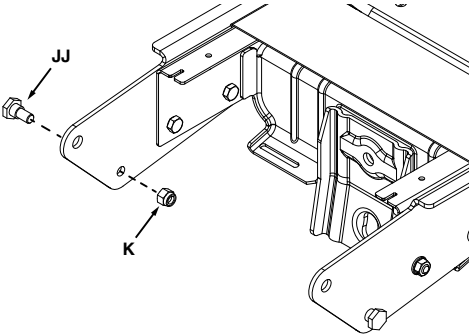
Fig. 15



STEP 2: (Fig. 16)

1. Assemble a shoulder bolt (JJ) and 3/8" nylock nut (K) to both front mounting plates.

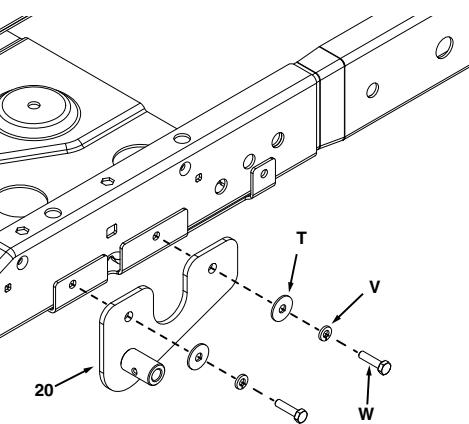
Fig. 16



STEP 3: (Fig. 17)

1. Remove the two bolts holding on the rear frame strap.
2. Attach the L.H. hanger bracket (34) using two M6 x 1 x 25 bolts (W), 1/4" lock washers (V), and .281 x .875 washers (T) to the holes that you just removed bolts from.
3. Repeat for R.H. hanger bracket (33).

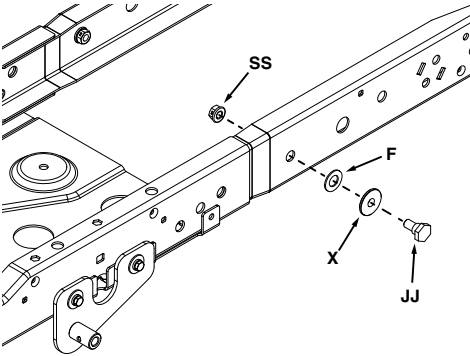
Fig. 17



STEP 4: (Fig. 18)

1. Install a shoulder bolt (JJ), shoulder spacer (X), 1/2" x 1" washer (F), and 3/8" flanged nut (SS) to the sides of the tractor frame.

Fig. 18



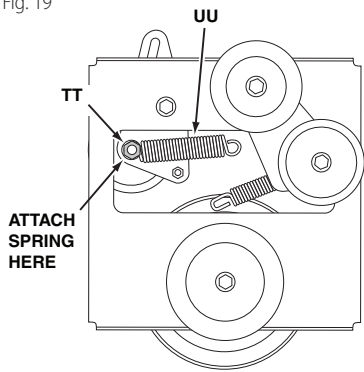
THIS SECTION IS FOR TRACTORS WITH AN ELECTRIC ATTACHMENT CLUTCH

If your tractor has a manual attachment clutch go to page 13.

STEP 5: (Fig. 19)

1. Turn the clutch idler assembly upside down.
2. Attach the spring (UU) to the bottom of the upper idler arm. Hook the spring onto the bolt that extends through the nut on the bottom of the upper idler arm and then install a 3/8" hex lock nut (TT) onto the bolt. Leave enough space for the spring to pivot.

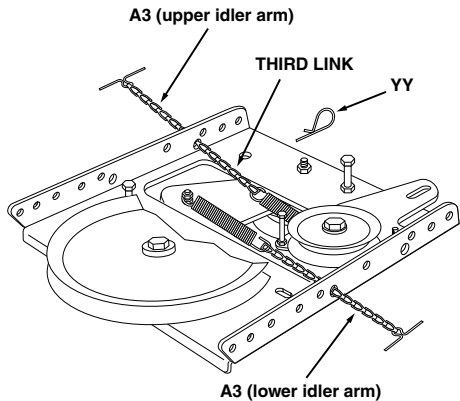
Fig. 19



STEP 6: (Fig. 20)

1. Insert tensioning chains (A3) through the holes shown and attach to the springs on the upper and lower idler arms.
2. Attach a 3/32" hairpin cotter (YY) to the chain attached to the upper idler arm, placing it in the third link from the spring.

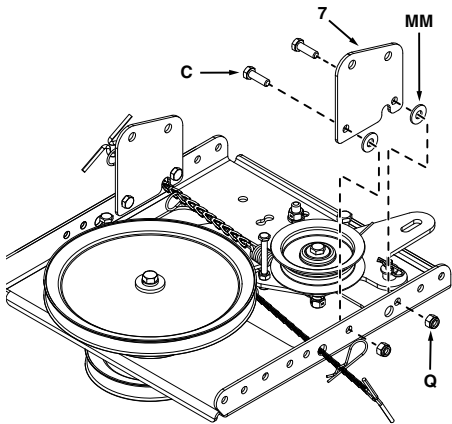
Fig. 20



STEP 7: (Fig. 21)

1. Attach the front pulley frame brackets (7) to the inside of the clutch idler assembly using four 5/16 x 1" hex bolts (C), 5/16" washers (MM), and 5/16" nylock nuts (Q).

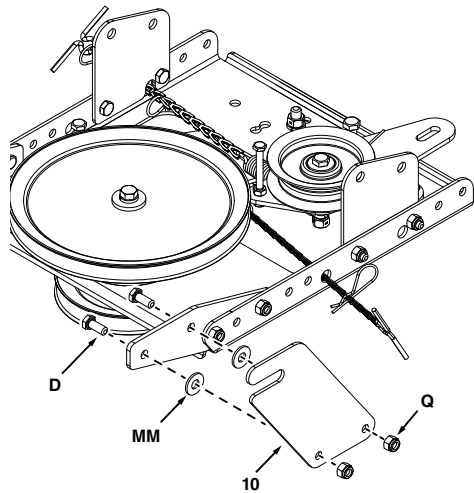
Fig. 21



STEP 9: (Fig. 23)

1. Attach the rear pulley frame brackets (10) to the outside of the rear extension straps (16) using four 5/16 x 3/4" hex bolts (D), 5/16" washers (MM), and 5/16" nylock nuts (Q).

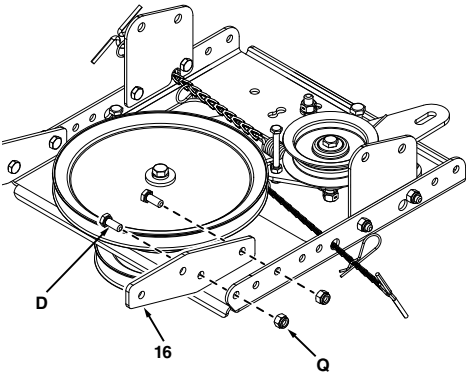
Fig. 23



STEP 8: (Fig. 22)

1. Attach the rear extensions straps (16) to the inside of the clutch idler assembly using four 5/16 x 3/4" hex bolts (D) and 5/16" nylock nuts (Q).

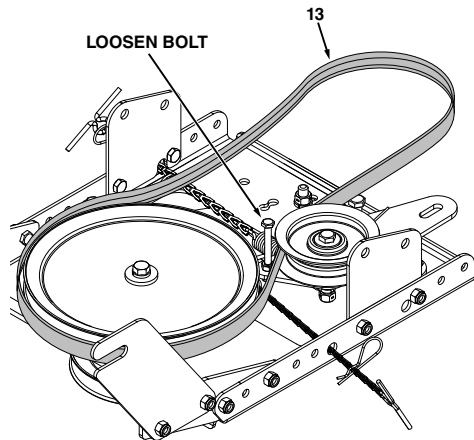
Fig. 22



STEP 10: (Fig. 24)

1. Slightly loosen the hex bolt next to the flat idler pulley. Install the 55" drive belt (13) between the hex bolt and the flat idler pulley with the flat side of the belt against the pulley. Retighten the hex bolt.
2. Loop the belt around the large v-pulley, placing it between the pulley and the hex bolt next to the pulley.

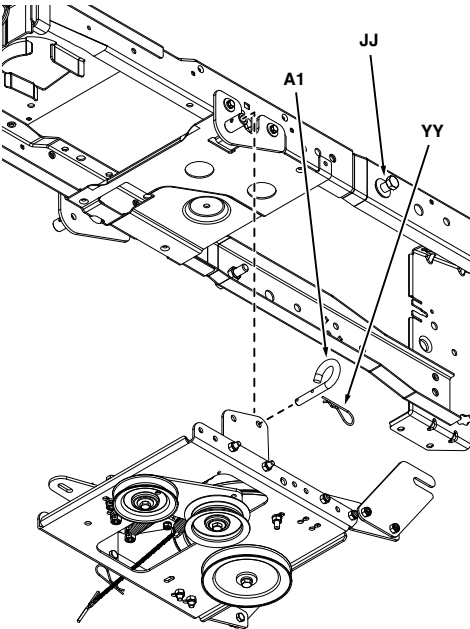
Fig. 24



STEP 11: (Fig. 25)

1. Attach the clutch/idler assembly to the tractor frame. Hook the notched rear pulley frame brackets onto the two shoulder bolts (JJ) assembled to the outside of the tractor frame. Lift the front of the assembly and attach it to the hanger brackets (LH) and (RH) using two pivot lock pins (A1) and 1/8" hairpin cotters (YY).

Fig. 25



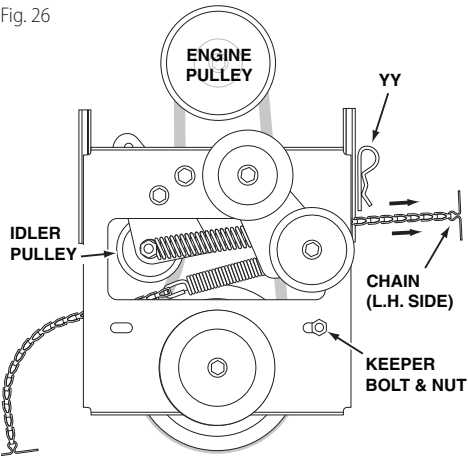
STEP 12: (Fig. 26)

1. Remove the belt guard for the PTO pulley on the tractor. Refer to "Cutting Deck Removal" in the SERVICE AND MAINTENANCE section of your tractor Operator's Manual.
2. Install the drive belt onto the tractor's PTO pulley. You may need to temporarily lift the belt from the large pulley on the clutch idler assembly.
3. Reinstall the belt guard for the tractor's PTO pulley. Be sure the belt guard is installed in the notch on the side of the tractor's electric clutch.
4. Place tension on the belt by pulling the left side tensioning chain out as far as the 3/32" hairpin cotter (XX) will allow. Secure the chain in this position by inserting a 1/8" hairpin cotter (YY) through the chain.



DO NOT start the engine until the PTO pulley belt guard has been reinstalled. The tractor's electric clutch could be damaged.

Fig. 26



VIEWED FROM UNDERNEATH

GO TO ASSEMBLY OF SNOW THROWER SECTION ON PAGE 21.

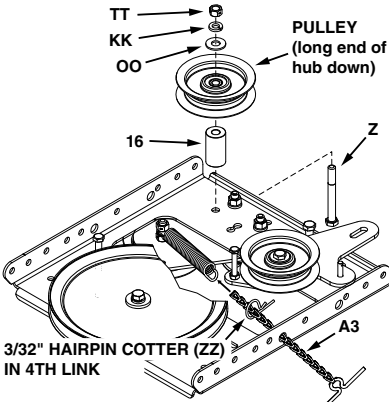
**THIS SECTION IS FOR TRACTORS WITH AN
MANUAL ATTACHMENT CLUTCH**

If your tractor has an electric attachment clutch go back to page 10.

STEP 1: (Fig. 27)

- 1. Attach the pulley (long end of hub facing down) and the large 3/8" spacer (16) to the clutch frame. Use a 3/8" x 3-1/4" hex bolt (Z), a 3/8" washer (O), a 3/8" lock washer (KK) and a 3/8" hex lock nut (TT).
- 2. Install a tensioning chain (A3) through the hole shown and then insert a 3/32" hairpin cotter (ZZ) into the 4th link.
- 3. Attach the chain to the spring on the lower idler arm.

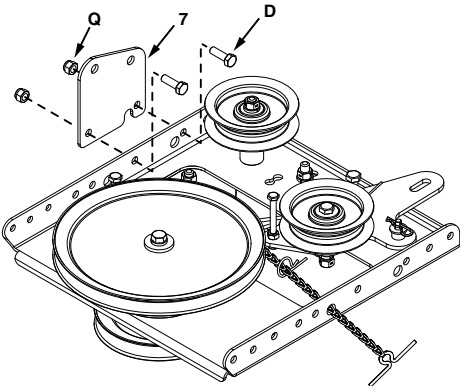
Fig. 27



STEP 2: (Fig. 28)

- 1. Attach a front pulley frame bracket (7) to the left outside of the clutch idler assembly using two 5/16 x 3/4" hex bolts (D) and 5/16" nylock nuts (Q).

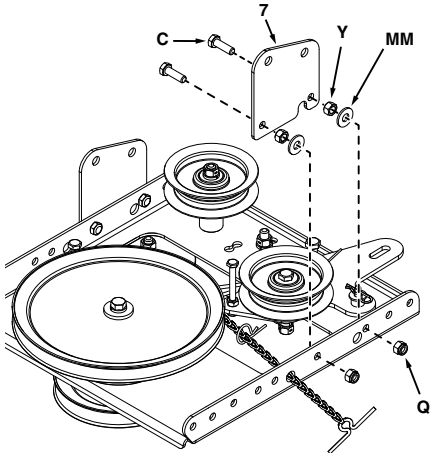
Fig. 28



STEP 3: (Fig. 29)

- 1. Attach a front pulley frame bracket (7) to the right inside of the clutch idler assembly using two 5/16 x 1" hex bolts (C), 5/16" hex nuts (Y), 5/16" washers (MM), and 5/16" nylock nuts (Q).

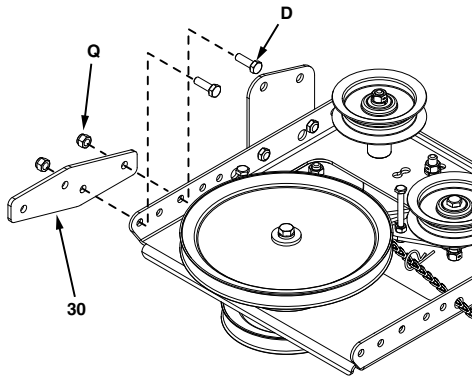
Fig. 29



STEP 4: (Fig. 30)

- 1. Attach a rear extension strap (30) to the left outside of the clutch idler assembly using two 5/16 x 3/4" hex bolts (D) and 5/16" nylock nuts (Q).

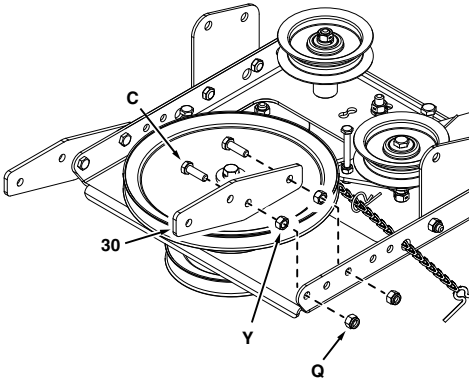
Fig. 30



STEP 5: (Fig. 31)

- 1. Attach a rear extension strap (30) to the right inside of the clutch idler assembly using two 5/16 x 1" hex bolts (C), 5/16" hex nuts (Y), 5/16" nylock nuts (Q).

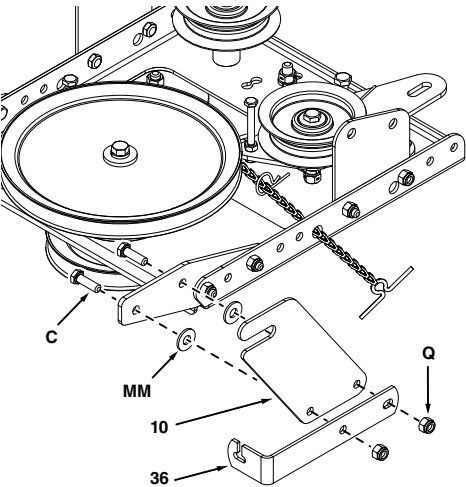
Fig. 31



STEP 7: (Fig. 33)

- 1. Attach a rear pulley frame bracket (10) and cable bracket (36) to the right rear extension strap (30) using two 5/16 x 1" hex bolts (C), 5/16" washers (MM), and 5/16" nylock nuts (Q).

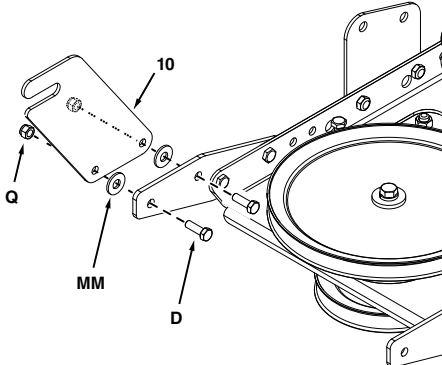
Fig. 33



STEP 6: (Fig. 32)

- 1. Attach a rear pulley frame bracket (10) to the left rear extension strap using two 5/16 x 3/4" hex bolts (D), 5/16" washers (MM), and 5/16" nylock nuts (Q).

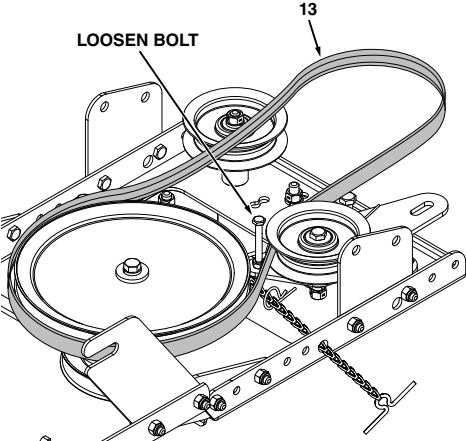
Fig. 32



STEP 8: (Fig. 34)

- 1. Slightly loosen the hex bolt next to the flat idler pulley. Install the 55" drive belt (13) between the hex bolt and the flat idler pulley with the flat side of the belt against the pulley. Retighten the hex bolt.
- 2. Loop the belt around the large v-pulley, placing it between the pulley and the hex bolt next to the pulley.

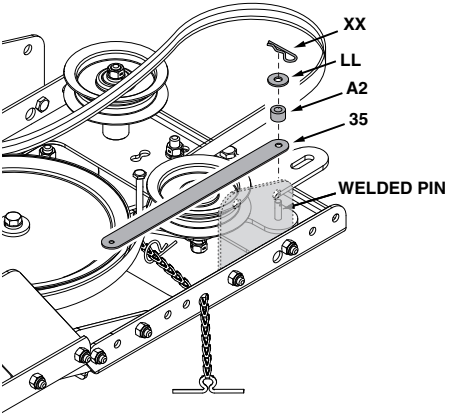
Fig. 34



STEP 9: (Fig. 35)

1. Install the cable strap (35), the 1/4" spacer (A2), and a 1/4" washer (LL) onto the welded pin on the idler arm. Secure the parts to the pin with a 5/64" hairpin cotter (XX).

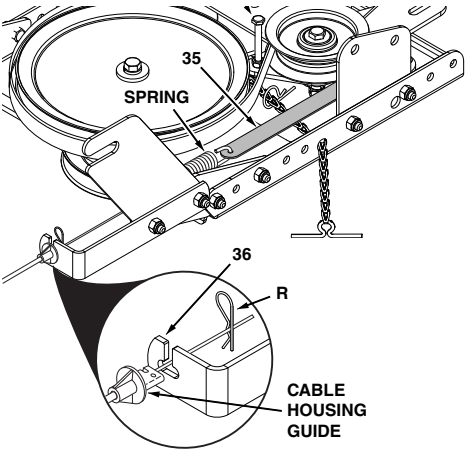
Fig. 35



STEP 10: (Fig. 36)

1. Move the tractor's attachment clutch lever to the disengaged position.
2. Attach the spring at the end of the tractor's clutch cable to the cable strap (35). Secure the cable housing guide to the cable bracket (36) using a 5/64" hair cotter pin (R).

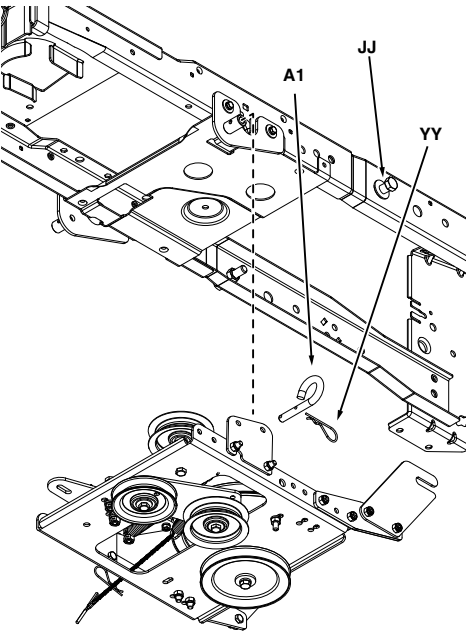
Fig. 36



STEP 11: (Fig. 37)

1. Attach the clutch/idler assembly to the tractor frame. Hook the notched rear pulley frame brackets onto the two shoulder bolts (JJ) assembled to the outside of the tractor frame. Lift the front of the assembly and attach it to the hanger brackets (LH) and (RH) using two pivot lock pins (A1) and 1/8" hairpin cotters (YY).

Fig. 37



**GO TO ASSEMBLY OF SNOW THROWER
SECTION ON PAGE 21.**

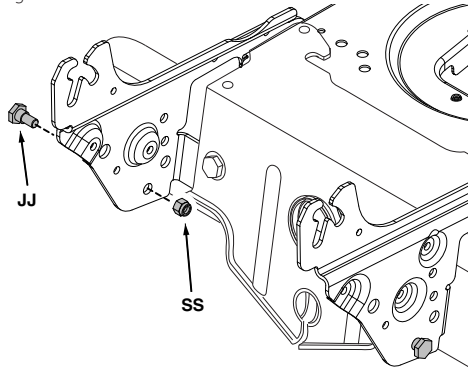
**IDENTIFY YOUR TRACTOR: IF YOUR TRACTOR
FRAME MATCHES THE STYLE SHOWN
BELOW, FOLLOW THESE INSTRUCTIONS.**



STEP 1: (Fig. 38)

1. Assemble a shoulder bolt (JJ) and a 3/8" nylock nut (SS) to the holes shown on each side of the tractor frame.

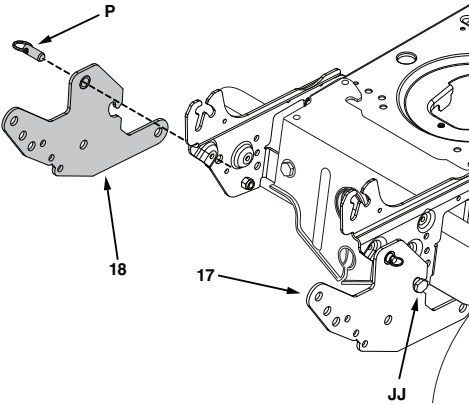
Fig. 38



STEP 2: (Fig. 39)

1. Place a side plate (17,18) onto each shoulder bolt (JJ) and install two quick release pins (P) as shown.

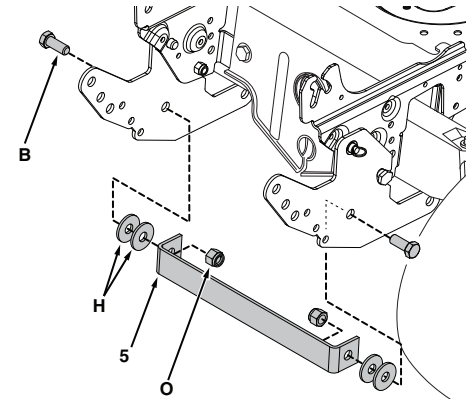
Fig. 39



STEP 3: (Fig. 40)

1. Attach the frame brace (5) between the side plates using two 1/2" x 1-1/4" hex bolts (B), four 1/2" x 1-1/2" washers (H) and two 1/2" nylock nuts (O).

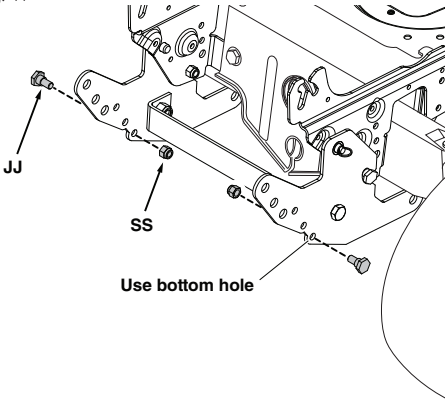
Fig. 40



STEP 4: (Fig. 41)

- 1. Install a shoulder bolt (JJ) and 3/8" nylock nut (SS) in the bottom hole in each front mount plate (17 and 18).

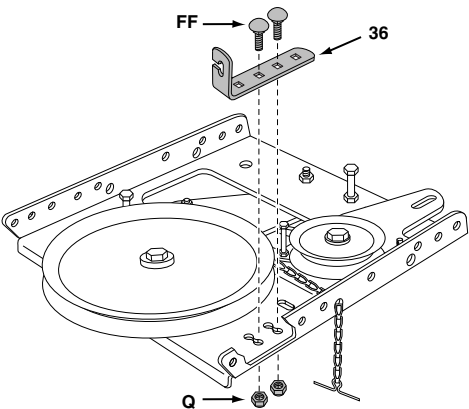
Fig. 41



STEP 6: (Fig. 43)

- 1. Assemble the cable bracket (36) to the outside half of the double holes in the bottom of the clutch/idler assembly using two 5/16" x 3/4" carriage bolts (FF) and 5/16" nylock nuts (Q).

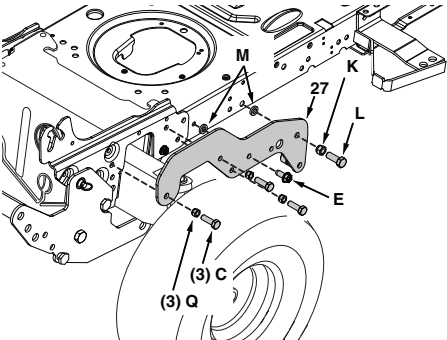
Fig. 43



STEP 5: (Fig. 42)

- 1. Attach the L.H. frame support (27) to the tractor. Install a 3/8" x 1" hex bolt (L), a bushing (M) and a nylock nut (K) in the rear hole of the support. Install a 5/16" x 3/4" thread forming bolt (E) and a bushing (M) in the fourth hole of the support. Install three 5/16" x 1" hex bolt (C) and 5/16" nylock nuts (Q) in the front three holes of the support. Tighten after all bolts are installed. Repeat this step using the R.H. frame support (28).

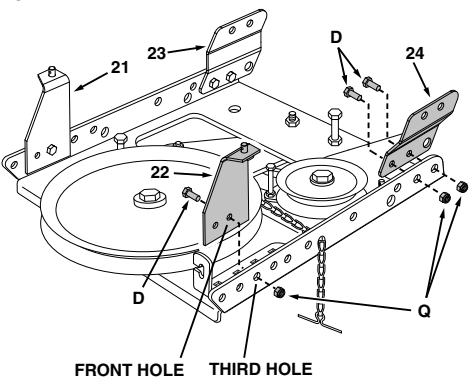
Fig. 42



STEP 7: (Fig. 44)

- 1. Attach the R.H. and L.H. rear frame brackets (21,22) to the **inside** of the clutch/idler assembly. Use one 5/16" x 3/4" hex bolt (D) and 5/16" nylock nut (Q) in the front hole of each bracket and the third hole in the clutch/ idler assembly. **Do not tighten yet.**
- 2. Assemble the R.H. and L.H. front frame brackets (23,24) to the **inside** of the clutch/idler assembly using two 5/16" x 3/4" hex bolts (D) and 5/16" nylock nuts (Q) for each bracket.

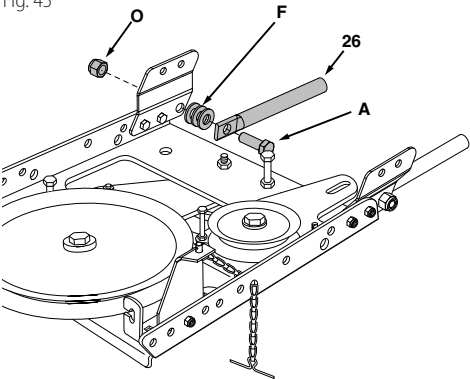
Fig. 44



STEP 8: (Fig. 45)

- 1. Assemble the two support tubes (26) to the inside of each front frame bracket (23 and 24) using a 1/2" x 1-1/2" hex bolt (A), three 1/2" x 1" washers (F) and a 1/2" nylock nut (O) for each tube. **Do not tighten yet.**

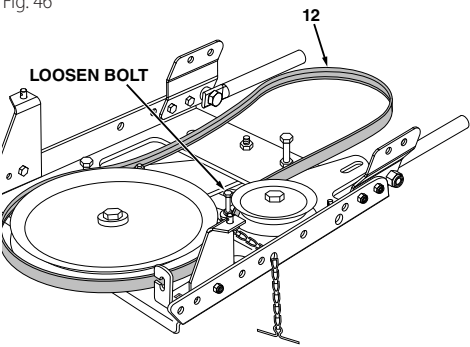
Fig. 45



STEP 9: (Fig. 46)

- 1. Select the 52" (shortest) drive belt (12) Slightly loosen the hex bolt next to the flat idler pulley. Install the drive belt between the hex bolt and the flat idler pulley with the flat side of the belt against the pulley. **Retighten** the hex bolt.
- 2. Loop the belt around the large v-pulley, placing it to the inside of the hex bolt that is beside the pulley.

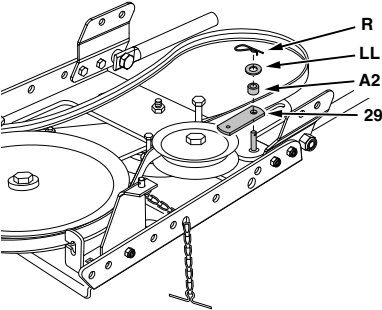
Fig. 46



STEP 10: (Fig. 47)

- 1. Place the extension strap (29), a 1/4" spacer (A2) and a 1/4" washer (LL) onto the welded pin on the idler arm. Install a 5/64" hair pin cotter (R) in the welded pin.

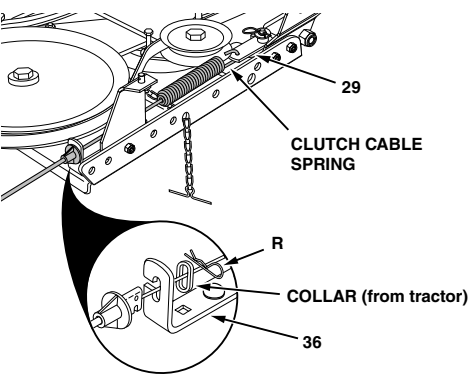
Fig. 47



STEP 11: (Fig. 48)

- 1. Disengage the tractor's attachment clutch lever.
- 2. Place the clutch/idler assembly onto the floor at the right side of the tractor.
- 3. Hook the end of the tractor's clutch cable spring to the extension strap (29) on the clutch/idler assembly.
- 4. Attach the tractor's mower clutch cable to the cable bracket (36) on the clutch/idler assembly. Secure the cable housing guide (groove down) to the cable bracket using the original collar and a 5/64" hair cotter pin (R).

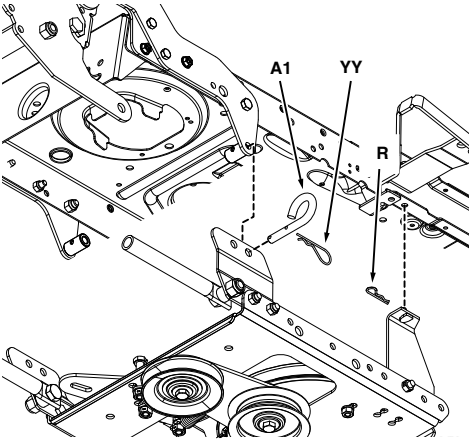
Fig. 48



STEP 12: (Fig. 49)

1. Attach the front of the clutch/idler assembly to the two frame support brackets (27 and 28) you assembled in step 5, using two pivot lock pins (A1) and 1/8" hairpin cottes (YY).
2. Attach the rear of the clutch/idler assembly to the bottom of the tractor frame using two small 5/64" hairpin cottes (R).

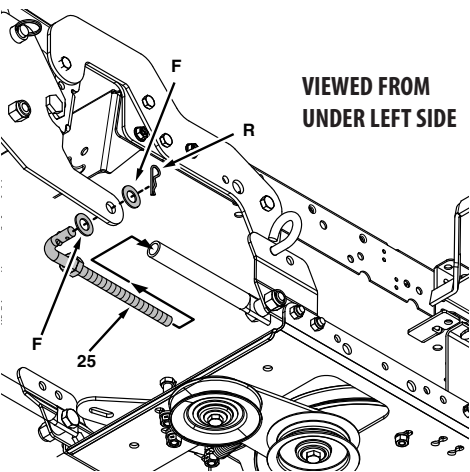
Fig. 49



STEP 14: (Fig. 51)

1. Insert the threaded end of a support link (25) into the support tube on the left side of the tractor. Assemble a 1/2" x 1" washer (F) onto the bent end of the link and insert it into the hole in the front mount plate (17). Assemble another 1/2" x 1" (F) washer onto the end of the link and secure it with a small 5/64" hairpin cotter (R). Repeat on the right hand side.

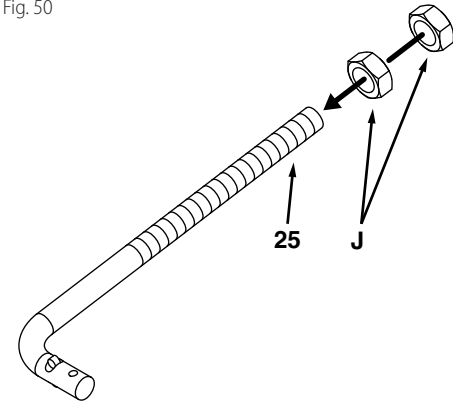
Fig. 51



STEP 13: (Fig. 50)

1. Assemble two 1/2" jam nuts (J) all the way onto the threads of each support link (25).

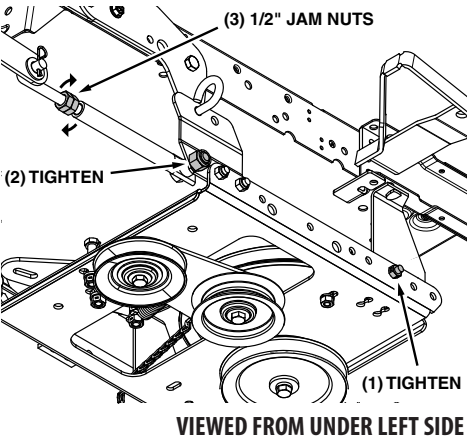
Fig. 50



STEP 15: (Fig. 52)

1. **Tighten** the bolt and nut in each rear frame bracket.
2. **Tighten** the bolt and nut in each support tube.
3. **Tighten** the jam nuts on each support link against the end of the support tube until slack is gone.

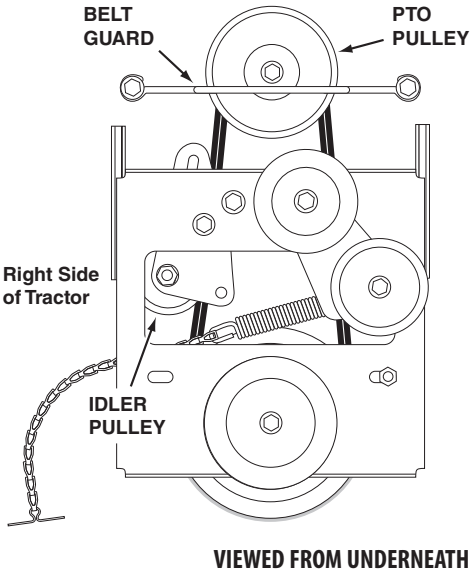
Fig. 52



STEP 16: (Fig. 53)

- 1. Move the tractor's attachment clutch lever to the disengaged position.
- 2. Remove the belt guard for the PTO pulley on the tractor's engine. Refer to "Cutting Deck Removal" in the SERVICE AND MAINTENANCE section of your tractor Operator's Manual.
- 3. Install the drive belt onto the engine's PTO pulley. You may first need to temporarily lift the belt from the large pulley on the clutch idler assembly.
- 4. Reinstall the belt guard.

Fig. 53



**GO TO ASSEMBLY OF SNOW THROWER
SECTION ON PAGE 21.**

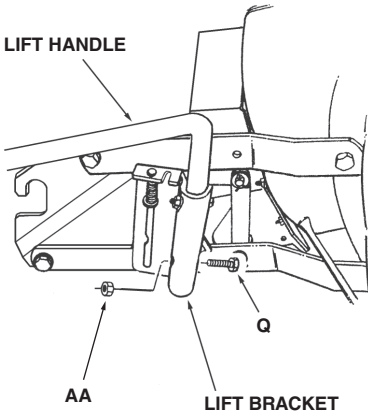
ASSEMBLY OF THE SNOW THROWER

Step 1: (Fig. 54)

1. Place the lift handle into the lift bracket on the right side of the snow thrower. Fasten the handle to the bracket using two 5/16" x 1-3/4" hex bolts (AA) and 5/16" Nylock nuts (Q).

NOTE: Be sure the lift release cable's plastic covering stays inserted into the trigger assembly for the next step.

Fig. 54

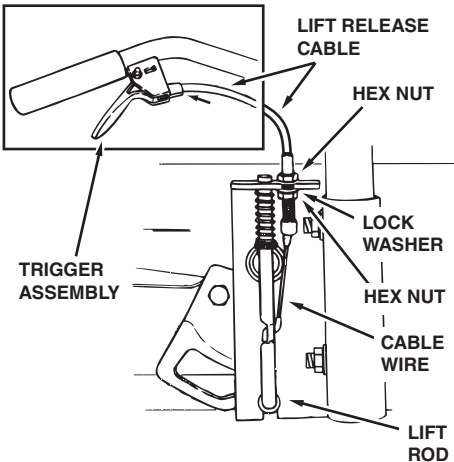


Step 2: (Fig. 55)

1. Push the lift handle down into the locked position. Insert the end of the cable wire into the hole in the lift rod. Place the threaded fitting into the slot in the lift bracket, with one hex nut above and one hex nut and the lock washer below the slot. Tighten the nuts, adjusting them to eliminate slack in the cable wire. Refer also to the Service and Adjustments section.

HINT: For easier assembly of the lift release cable, tilt the snow thrower forward onto the spiral auger.

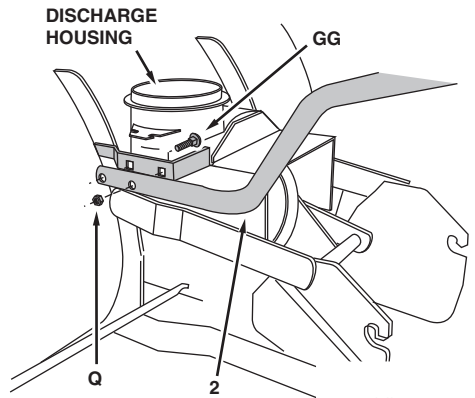
Fig. 55



Step 3: (Fig. 56)

1. Tilt the snow thrower back down to the ground.
2. Remove the nylon tie which fastens the auger drive belt to the discharge housing, leaving the belt assembled around the pulleys.
3. Remove the nylon tie which fastens the chute crank rod to the crank rod support tube (2).
4. Assemble the crank rod support tube to the bracket on the left side of the discharge housing using two 5/16" x 1-1/4" carriage bolts (GG), and 5/16" Nylock nuts (Q).

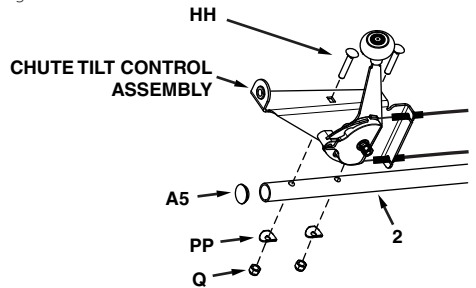
Fig. 56



Step 4: (Fig. 57)

1. Install the plug (A5) into the end of the crank support tube.
2. Attach the chute tilt control assembly to the top side of the crank rod support tube (2) using two 5/16" x 1-3/4" carriage bolts (HH), bowed washers (PP) and 5/16" nylock nuts (Q).

Fig. 57

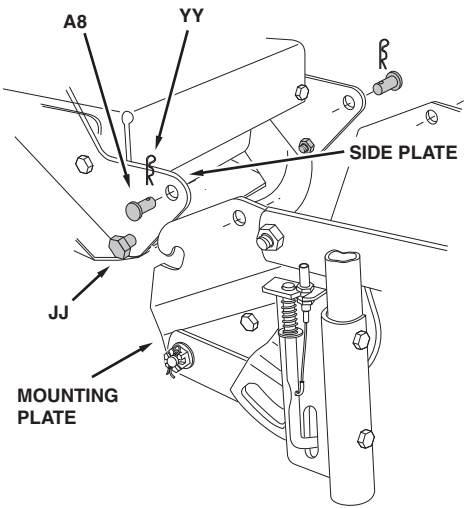


ATTACHING SNOW THROWER TO TRACTOR

Step 1: (Fig. 61)

1. Place the snow thrower on a flat, level surface.
2. Extend the auger belt out behind the snow thrower, keeping the belt assembled to the snow thrower pulleys.
3. Roll the tractor up behind the snow thrower, centering it between the snow thrower's mounting plates.
4. Raise the rear of the snow thrower by lifting up on the lift handle until the notches in the mounting plates align with the shoulder bolts (JJ) in the tractor's side plates. Guide the bolts into the notches.
5. Delay installing the clevis pins (A8) until you have assembled the belt as instructed in steps 56 and 57.

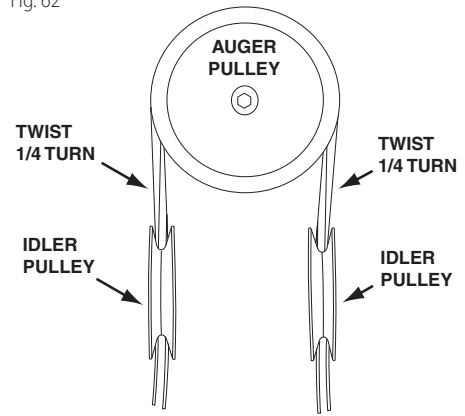
Fig. 61



Step 2: (Fig. 62)

1. The auger belt comes pre-assembled to the pulleys on the snow thrower housing. Make sure the belt passes over the top of the auger pulley and then twists 1/4 turn to pass underneath each side idler pulley. The "V" side of the belt must mate with the grooves of the pulleys.

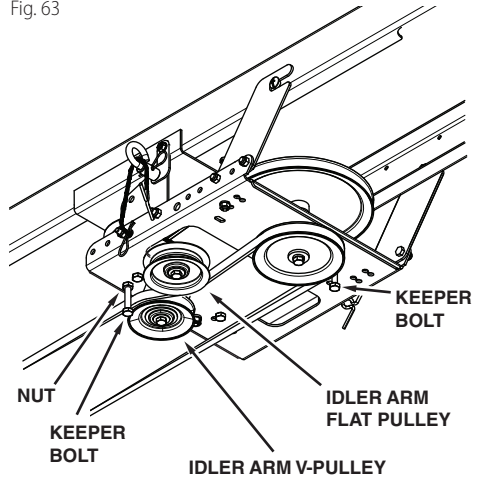
Fig. 62



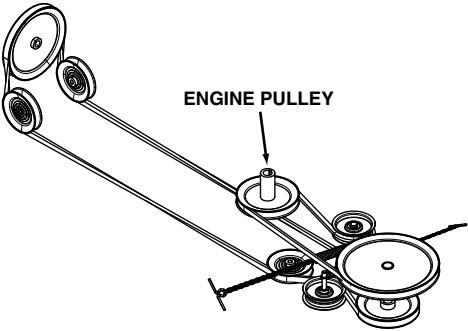
Step 3: (Fig. 63)

1. Push the lift handle down to increase slack in the belt.
2. Swing the lower idler arm over to the left side.
3. Slightly loosen the belt keeper bolts located beside the idler arm V-pulley and the rear V-pulley.
4. Place the auger belt around the rear V-pulley and between the two pulleys on the idler arm. The "V" side of the belt must be seated in the grooves of the V-pulleys.
5. Retighten the two keeper bolts.

Fig. 63



BELT ROUTING DIAGRAM



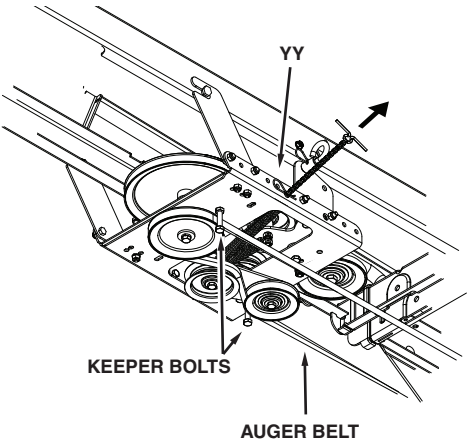
SETTING THE AUGER BELT TENSION

Step 1: (Fig. 64)

- 1. Pull the tensioning chain until it is extended out as far as the 3/32" hairpin cotter installed in the chain will allow. Install a 1/8" hairpin cotter (YY) through the chain to secure it in the extended position.

NOTE: After pulling the chain out, check to make sure the belt does not rub against the keeper bolts. If the belt rubs, slightly loosen the bolts, move them as far from the pulleys as possible, and retighten.

Fig. 64

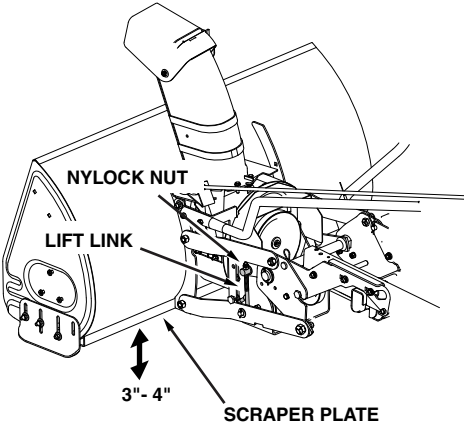


SETTING THE SNOW THROWER LIFT HEIGHT

Step 1: (Fig. 65)

- 1. Adjust the nut on the lift link found on each side of the snow thrower, so that the auger housing is level when raised, and the scraper plate has approximately 3" to 4" of ground clearance.

Fig. 65

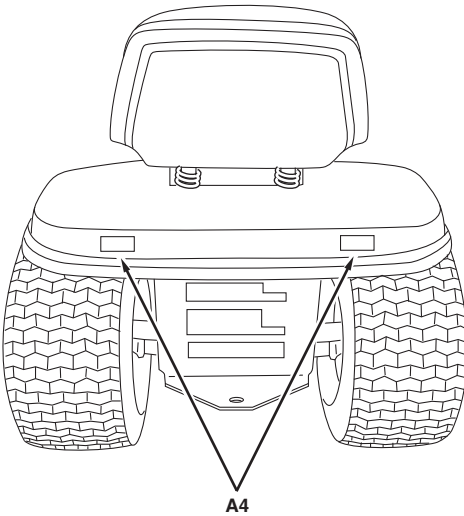


ATTACH REFLECTORS TO REAR FENDER

Step 1: (Fig. 66)

- 1. If your tractor is not equipped with rear reflectors, assemble the supplied rear reflectors (A4) to the rear fender. Place the reflectors as close to the bottom of the fender and as far apart as the shape of the fender will allow.

Fig. 66



CHECKLIST

Before you operate your snow thrower, please review the following checklist to help ensure that you will obtain the best performance from your snow thrower

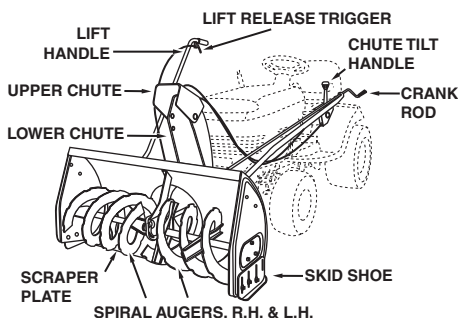
1. All assembly instructions have been completed with all bolts and nuts properly tightened.
2. Check the engine belt and the auger belt. Make sure they are routed properly around pulleys and inside all belt keepers.
3. Check discharge chute for proper rotation.
4. Check operation of tilt control for upper chute.
5. Verify that the lift handle will lock into and release from the raised transport position. (Refer to the Service and Adjustments section.)
6. Check skid shoe adjustment. (Refer to the Service and Adjustments section.)

OPERATION

Know your Snow Thrower

Read this owner's manual and safety rules before operating your snow thrower.

Compare the illustration below with your snow thrower to familiarize yourself with the various controls and their locations.



CHUTE TILT HANDLE: Pivots the Upper Chute up or down to control the angle and distance of discharge.

CRANK ROD: Rotates the Lower and Upper Chutes to control the direction of discharge.

LIFT HANDLE: Used to lift or lower the snow thrower to transport or operating position.

LIFT RELEASE TRIGGER: Releases the lock which holds the snow thrower in the transport position

UPPER AND LOWER DISCHARGE CHUTE: Controls direction and height of snow discharge.

SCRAPER PLATE: Replaceable plate that absorbs wear and impact from contact with ground.

SKID SHOE: Controls amount of clearance between the scraper plate and the ground.

SPIRAL AUGER, R.H. & L.H.: Feed snow to the impeller fan at the center of the housing.

BEFORE STARTING

1. Use the end of assembly checklist to verify that all instructions have been properly completed.
2. Make sure the skid shoes are adjusted to maintain adequate ground clearance between the snow thrower and the type of surface to be cleared. (Refer to the Service and Adjustments section).
3. Make sure the tractor engine has the correct oil for winter operation (SAE 5W-30). Refer to tractor owner's manual.

HOW TO START YOUR SNOW THROWER

1. The tractor should be sitting with the engine running at full throttle. Move the attachment clutch to the engaged position, starting the snow thrower before the tractor clutch is engaged.

HOW TO STOP YOUR SNOW THROWER

1. To stop the snow thrower, disengage the tractor's attachment clutch lever for manual clutches or the clutch switch for electric clutches. Refer to your tractor owner's manual.

HOW TO USE YOUR SNOW THROWER



CAUTION: Never direct discharge towards bystanders or windows. Do not allow anyone in front of unit.

Controlling Snow Discharge

1. To control the direction snow is thrown, the discharge chute has 180 degrees of rotation. Turn the crank rod clockwise to rotate the chute to the left. Turn the crank rod counterclockwise to rotate the chute to the right.
2. To control the distance snow is thrown, the upper section of the discharge chute pivots up and down. Push forward on the chute tilt handle to pivot the chute down, decreasing the distance snow is thrown. Pull back on the handle to pivot the chute up, increasing the distance snow is thrown.

Raising and Lowering

1. To raise, push down on the lift handle until the snow thrower locks in the raised transport position.
2. To lower, push down slightly on the lift handle and pull the trigger. With the trigger pulled, slowly lower the snow thrower until it reaches the ground.



CAUTION: Do not operate the snow thrower without the rear weight attached to the tractor to provide extra traction and stability.

Removing Snow

Snow removal conditions vary greatly from light fluffy snowfall to wet heavy snow. Operating instructions must be flexible to fit the conditions encountered. The operator must adapt the lawn tractor and snow thrower to depth of snow, wind direction, temperature and surface conditions.

1. Before beginning operation, thoroughly inspect the area of operation and remove all door mats, sleds, boards, wires and other foreign objects.
2. The spiral auger speed is directly related to engine speed. For maximum snow removal and discharge, maintain high engine r.p.m. (full throttle). It is advisable to operate the lawn tractor at a slow ground speed (1st gear) for safe and efficient snow removal.
3. In deep, drifted or banked snow it will be necessary to use full throttle and a slow ground speed (1st gear). Drive forward into the snow, depress the tractor's clutch-brake pedal and allow the spiral auger to clear the snow. Repeat this method until a path is cleared. On the second pass, overlap the first enough to allow the snow thrower to handle the snow without repeated stopping and starting of forward motion.
4. In extremely deep snow, raise the snow thrower from the ground to remove the top layer and drive forward only until the tractor's front tires reach the uncleared bottom layer of snow. Depress the tractor's clutch-brake pedal and allow the spiral auger to clear the snow. Reverse the tractor and lower the snow thrower to the ground. Drive the tractor forward until the snow again becomes too deep. Repeating this process into and out of drifts will eventually clear even the deepest of snow piles.
5. If the snow thrower becomes clogged with snow or jammed with a foreign object, disengage the snow thrower immediately and shut off the tractor engine. Unclog the snow thrower before resuming operation.



DANGER: Shut off engine and disengage snow thrower before unclogging discharge chute. Unclog using a wooden stick, not your hands.

Operating Tips

1. Discharge snow down wind whenever possible.
2. To help prevent snow from sticking to the snow thrower, allow the snow thrower to reach outdoor temperature before using it. A light coat of wax may also be applied to the inside surface of the snow thrower housing and discharge chute.
3. Use tire chains to improve traction.
4. Use rear wheel weights to improve traction.
5. Before the first snowfall, remove all stones, sticks and other objects which could become hidden by the snow. Permanent obstacles should be marked for visibility.
6. Overlap each pass slightly to assure complete snow removal.

MAINTENANCE

Customer Responsibilities

Read and follow the maintenance schedule and the maintenance procedures listed in this section.

Lubrication

- 1. Oil all pivot points on the snow thrower.
- 2. Oil the pivot points of the two idler arms on the clutch/idler assembly.
- 3. Apply penetrating oil to the control cables of the discharge chute.
- 4. Apply a good grade of spray lubricant to the trigger assembly and the chute tilt control assembly.

Check Scraper and Shoes For Wear

Refer to figures 67 and 68

- 1. The scraper plate and skid shoes on the bottom of the snow thrower are subject to wear. To prevent damage to the spiral auger housing, replace plate and shoes before wear is excessive.

MAINTENANCE

Storage Recommendations

- 1. Lower the snow thrower to the ground.
- 2. Remove the snow thrower from the tractor.
- 3. Clean the snow thrower thoroughly. Wash off any salt deposit which may have dried on the thrower and housing.
- 4. Any bare metal that has become exposed should be painted or coated with a light oil to prevent rust.
- 5. Store in a dry place.

Removing the Spiral Auger Housing

Refer to figures 67 and 68

- 1. Lower the snow thrower to the ground.
- 2. Remove the clevis pins. See figure 61.
- 3. Lock the snow thrower's lift handle in the down position to decrease belt tension.
- 4. Release the spring tension from the auger belt idler arm on the bottom of the clutch/idler assembly.
- 5. Remove the auger drive belt from the clutch/idler assembly. See figure 63.
- 6. Pull the spiral auger housing assembly off of the tractor.

Parts to Remove at End of Season

- 1. Remove the clutch/idler assembly. (The two hanger brackets and the two shoulder bolts may be left attached to the tractor frame.)
- 2. Remove the drive belt from the engine pulley.
- 3. If you replaced the engine pulley keeper on a manual attachment clutch tractor, reinstall the tractor's original engine pulley keeper. See figure 33 or figure 39.

- 4. If you have a rod operated attachment clutch, remove the engagement rod from the tractor's clutch arm. See figure 29.
- 5. If a front mounted attachment is to be used, remove the side plates from the tractor. Be sure to assemble bolts back into the empty holes in the tractor frame.

MAINTENANCE SCHEDULE

Fill in dates as you complete regular service.	Service Dates											
	Before each use			Every season			Before storage					
Check for loose fasteners	X											
Check for worn or damaged parts	X											
Clean Blade				X								
Lubricate Blade					X							

SERVICE AND ADJUSTMENTS



CAUTION: Before servicing or adjusting the snow thrower, shut off the engine, remove the spark plug wire(s), set the parking brake and remove the key from the tractor ignition.

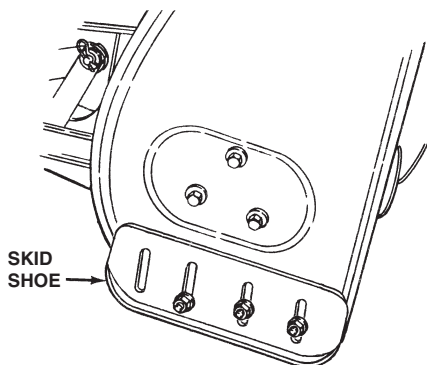
Replacing Auger Belt

1. Disengage the tractor's attachment clutch.
2. Lower the snow thrower to the ground.
3. Remove the clevis pins. See figure 61.
4. Lock the snow thrower's lift handle in the down position to decrease belt tension.
5. Release the spring tension from the auger belt idler arm on the bottom of the clutch/idler assembly.
6. Remove the auger drive belt from the clutch/idler assembly and from the spiral auger housing.
7. Install new belt over top of large auger drive pulley and under the two side idler pulleys. Twist the belt 1/4 turn to seat the "V" of the belt in the groove of each idler pulley. Refer to figure 62.
8. Assemble the belt onto the clutch/idler assembly.

Skid Shoe Adjustment

1. The skid shoes are mounted on each side of the spiral auger housing. They regulate the distance the scraper plate is raised above the plowing surface. When removing snow from a gravel driveway or an uneven surface, it is advisable to keep the scraper plate as high above the surface as possible to prevent possible damage to the spiral auger. On blacktop or concrete surface, keep the scraper plate as close to the surface as possible.
2. Raise the snow thrower off the ground and place a block under each end of the scraper plate. Loosen the six hex nuts securing the skid shoes to the housing. Adjust the skid shoes up or down and retighten the nuts securely. Adjust both skid shoes to the same height to keep the housing and the scraper plate level. See figure 67.

Fig. 67



Lift Release Cable Adjustment

1. If the lift rod does not lock the snow thrower securely in the transport position, loosen the upper hex nut on the lift bracket a few turns and tighten the lower hex nut. Refer to figure 54.
2. If the lift rod fails to unlock completely to lower the snow thrower, loosen the lower hex nut on the lift bracket a few turns and tighten the upper hex nut. Refer to figure 54.

Clutch Disengagement Adjustment

(For tractors with engagement rod clutches only. Not for electric clutches or cable clutches).

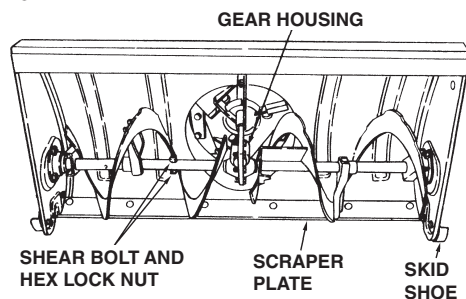
If the spiral auger on the snow thrower does not stop when the attachment clutch lever on the tractor is disengaged, then adjustment is necessary. Proceed as follows. Refer back to figure 33.

1. Place the attachment clutch lever in the disengaged position.
2. Remove the hairpin cotter from the engagement rod trunnion and lift the trunnion out of the hole in the idler arm.
3. Screw the trunnion a few turns towards the front end of the rod.
4. Replace the trunnion into the hole in the idler arm and secure it with the hairpin cotter.
5. Check the operation of the snow thrower. If the spiral augers still do not stop, repeat the above steps until the augers stop when the attachment clutch lever is placed in the disengaged position.

Spiral Auger

1. The spiral augers are secured to the auger shaft with two shear bolts and nylock nuts. If you hit a foreign object or if ice jams the augers, the snow thrower is designed so that the bolts will shear.
2. If the augers will not turn, check to see if the shear bolts have sheared. See figure 68. Two replacement shear bolts and nylock nuts have been provided with the snow thrower. For future use order part number 42489 shear bolt and number 47810 nylock nut.

Fig. 68



Adjusting Lift Height, Leveling

The snow thrower is equipped with two threaded lift links for adjusting the lift height and leveling of the snow thrower in the raised position.

To Adjust the Lift Height

Refer to figure 65

- 1. Raise the snow thrower to the highest position.
- 2. Lower the snow thrower to the ground.
- 3. Check the clearance between the rear of the idler bracket (item 39) and the lift shaft assembly (item 1).
A minimum 1/16" clearance in the raised position is necessary to avoid possible damage to the lift system.
- 4. To increase the lift height, tighten the nuts on the top of both lift links equally until 3" to 4" of ground clearance is obtained. The maximum clearance is approximately 4 inches for GT tractors and 3 inches for YT tractors.

To Level When Raised

Refer to figure 65

- 1. To make the snow thrower level when it is in the raised position, adjust the nut on the top of the lift link on one side of the snow thrower until the snow thrower is approximately level. It is not critical that the snow thrower be exactly level in the raised position, it will level out when it is lowered to the ground.

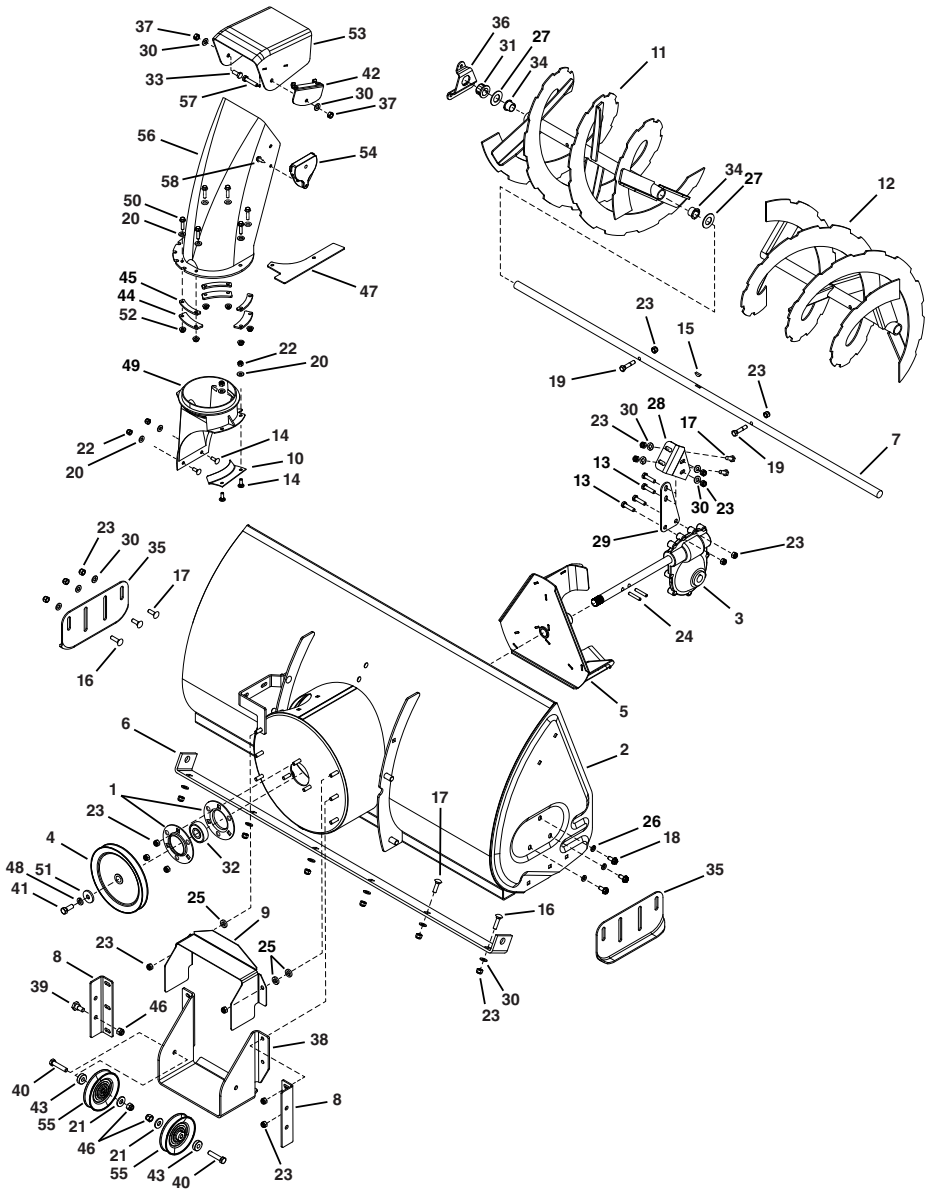
TROUBLESHOOTING

Problem	Cause	Correction
Spiral Augers don't turn	<ul style="list-style-type: none">1. Upper or lower V belt too loose2. Upper or lower V belt broken3. Shear bolts are sheared.	<ul style="list-style-type: none">1. Increase tension on V belt2. Replace V belt3. Replace shear bolts
Clogged Discharge Chute	<ul style="list-style-type: none">1. Tractor ground speed too fast2. Tractor throttle set too low3. Snow too deep4. Snow melts during contact with the snow thrower	<ul style="list-style-type: none">1. Use lower tractor gear2. Increase to full throttle3. Raise the snow thrower4. Allow snow thrower to cool to outdoor temperature before using
Snow Thrower Stalls Tractor Engine	<ul style="list-style-type: none">1. Object jammed in Spiral Auger2. Hard or heavy snow	<ul style="list-style-type: none">1. Stop engine, disengage the snow thrower clutch and clear the auger2. Increase to full throttle and decrease ground speed
Front wheels slide instead of steering	<ul style="list-style-type: none">1. Not enough traction at front wheels	<ul style="list-style-type: none">1. Increase scraper plate clearance by lowering skid shoes2. Pull down on lift handle to increase weight on front wheels
Snow thrower rides up over snow	<ul style="list-style-type: none">1. Tractor ground speed too fast2. Bottom snow is icy or hard packed	<ul style="list-style-type: none">1. Reduce ground speed2. Lower the skid shoes so that front of skid shoe is lower than the rear.

Parts

Repair Parts for Model 486.248374 42" Snow Thrower

To purchase repair parts, call the following toll-free number:
1-888-331-4569



Ref.	Part No	Qty	Description
1	28237	2	Flange, Bearing
2	67629BL3	1	Housing Assembly
3	71464	1	Gear Assembly
4	47026	1	Pulley, V Type
5	69823BL3	1	Impeller Assembly
6	24773BL3	1	Scraper Plate
7	25982	1	Shaft, Auger Gearbox
8	27508BL1	2	Bracket, Down Stop
9	24816BL3	1	Cover, Belt
10	27510BL1	1	Chute Reinforcement
11	67689BL3	1	Auger Assembly, L.H.
12	67688BL3	1	Auger Assembly, R.H.
13	43063	4	Bolt, Hex 5/16"-18 x 1"
14	44950	4	Carriage Bolt, 1/4"-20 x 3/4"
15	HA20185	1	#61 Woodruff Key
16	44326	4	Carriage Bolt, 5/16"-18 x 1"Lg.
17	43080	12	Carriage Bolt, 5/16"-18 x 3/4"Lg.
18	47630	6	Bolt, Self-Tap 5/16"-18 x 1-1/2"
19	42849	2	Bolt, Shear 5/16"-18 x 1-1/2"
20	43088	10	Washer, 1/4"
21	43070	2	Washer, 3/8"
22	47189	4	Hex Nut, 1/4"-20 Nylock
23	47810	29	Hex Nut, 5/16"-18 Nylock
24	41625	2	Spiral Pin, 1/4" x 1-1/2"Lg.
25	42846	3	Bushing
26	43086	6	Lock Washer, 5/16"
27	43009	6	Washer, .785" x 1.57" x .057"
28	27915BL3	1	Brace, Gearbox Top
29	27916BL3	1	Brace, Gearbox Lower
30	43081	18	Washer, 5/16" Std. Wrt.

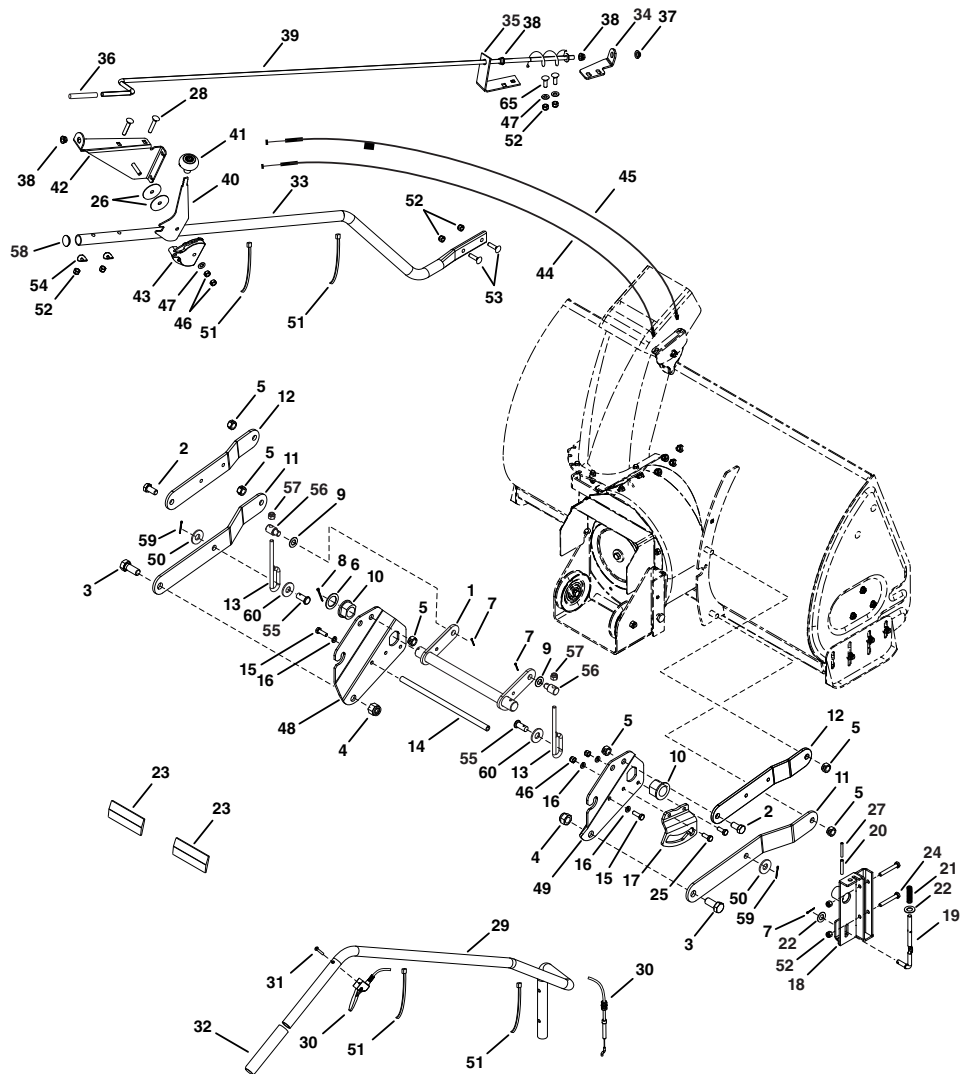
Ref.	Part No	Qty	Description
31	47615	2	Bearing, Flange
32	42844	1	Bearing, Ball
33	43182	1	Hex Bolt, 5/16"-18 x 3/4"
34	741-0493C	4	Bearing, Split, 3/4"
35	24279BL1	2	Skid Shoe
36	27458BL1	2	Flange, Bearing
37	43064	2	Nut, Hex 5/16"-18 Loc 2-Way
38	27502BL3	1	Bracket, Idler
39	48106	4	Bolt, Shoulder
40	41576	2	Hex Bolt, 3/8"-16 x 1-3/4"
41	44377	1	Hex Bolt, 3/8"-24 x 1"
42	27584BL1	1	Bracket, Cable
43	42850	2	Spacer
44	27809	3	Chute Keeper
45	27810	3	Chute Spacer
46	HA21362	4	Hex Nut, 3/8"-16 x 1"
47	27509BL1	1	Bracket, Chute Anti-Rotation
48	43003	1	Lock Washer, 3/8"
49	27505	1	Chute Adapter
50	43661	6	Hex Bolt, 1/4"-20 x 1"
51	42828	1	Washer
52	47598	6	Hex Lock Nut, 1/4" Flanged
53	41620	1	Chute, Upper
54	42834	1	Guide, Cable
55	47044	2	Pulley, V Type 4"
56	41621	1	Chute, Lower
57	43085	1	Hex Bolt, 5/16"-18 x 1-1/2"
58	41622	1	Screw, 1/4"-14 x 5/8"
59	3-218	1	Owner's Manual

Parts

Repair Parts for Model 486.248374 42" Snow Thrower

To purchase repair parts, call the following toll-free number:

1-888-331-4569



Ref.	Part No	Qty	Description
1	68550BL3	1	Lift Shaft Assembly
2	41616	2	Hex Bolt, 1/2"-13 x 1"
3	41614	2	Hex Bolt, 5/8"-11 x 1-1/2"
4	41615	2	Nut, Hex Lock 5/8"-11 Thread
5	43262	6	Nut, Hex Lock 1/2"-13
6	43601	1	Washer, 1.59" x 1.032" x .060"
7	142	3	Pin, Cotter 1/8" x 3/4"
8	43093	1	Pin, Cotter 1/8" x 1-1/2"
9	R19171616	2	Washer, 17/32" x 1"
10	42939	2	Bearing, Flange with Flats
11	27753BL3	2	Link, 15.80" Long
12	27752BL3	2	Link, 11.75" Long
13	41807	2	Rod Lift
14	24311	1	Rod, Spacer
15	47599	2	Hex Bolt, 5/16"-18 x 1" (Locking)
16	43086	4	Lock Washer, 5/16"
17	24820BL1	1	Bracket, Lift
18	67784BL3	1	Assembly, Handle Lift Bracket
19	48049	1	Rod, Index Lift
20	47369	1	Pin, Spring 3/16" x 1-3/4"
21	42955	1	Spring Compression
22	R19131316	2	Washer, 13/32" x 13/16"
23	47788	2	Reflector, Rear
24	43084	2	Hex Bolt, 5/16"-18 x 1-3/4"
25	43182	2	Hex Bolt, 5/16"-18 x 3/4"
26	43572	2	Washer, .342" x 1.5" x .059"
27	47368	1	Pin, Spring 5/16" x 1-3/4"
28	42215	2	Carriage Bolt, 5/16"-18 x 1-3/4"
29	49916BL3	1	Tube, Lift Handle
30	49912	1	Trigger and Lift Cable Assembly

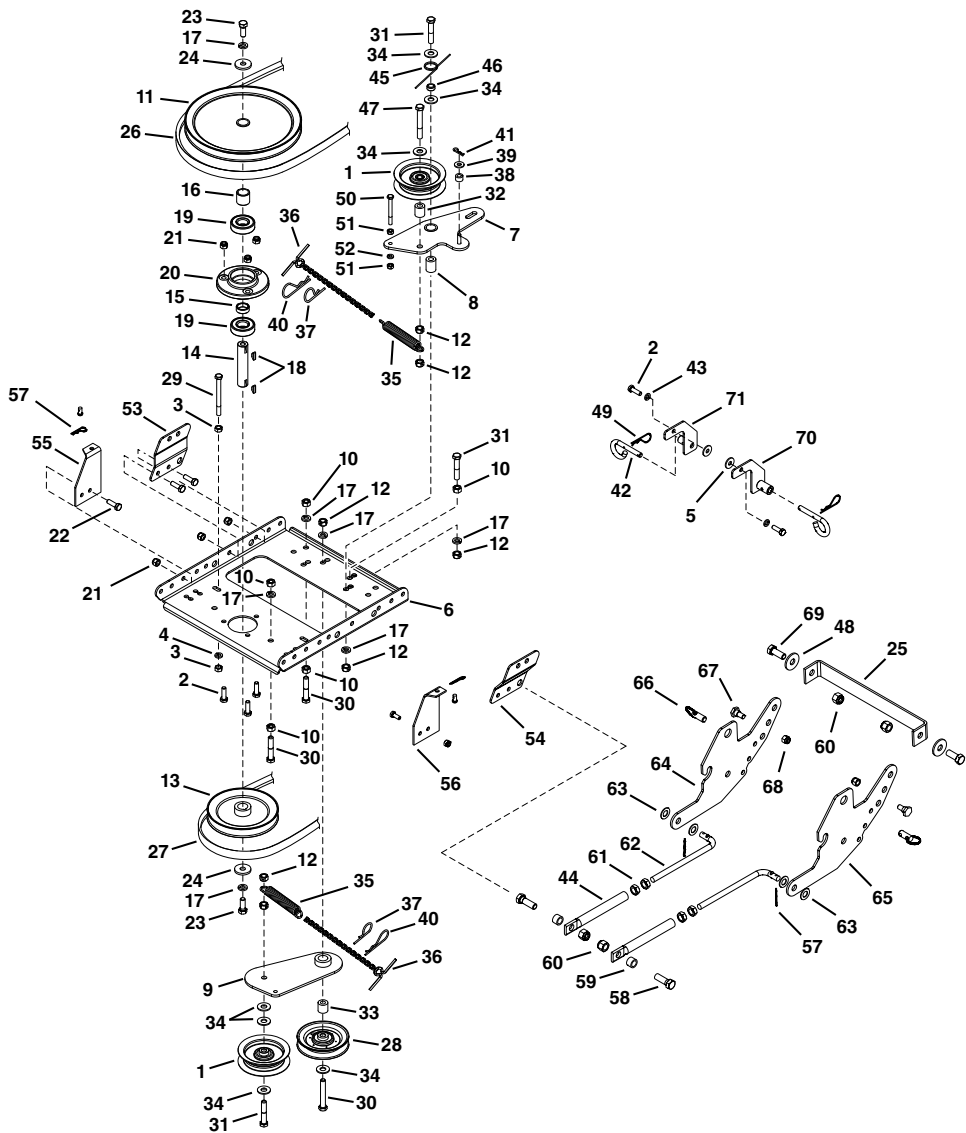
Ref.	Part No	Qty	Description
31	49266	1	Screw, Oval #10-24 x 1-1/2"
32	44482	1	Grip, Handle
33	27914BL3	1	Tube, Crank Rod Support
34	24393BL1	1	Bracket, Chute Crank
35	27708BL1	1	Bracket, Chute Crank
36	HA9822	1	Grip
37	44917	1	Palnut, 3/8"
38	42839	3	Bushing, 3/8" Plastic
39	68225BL3	1	Assembly, Chute Crank Rod
40	27585BL1	1	Handle, Chute Tilt
41	42833	1	Knob
42	68405BL3	1	Assembly, Chute Tilt Bracket
43	42834	1	Guide, Cable
44	42835	1	Cable, Chute Control
45	42836	1	Cable, Chute Control with Clip
46	43064	4	Nut, Hex Lock 5/16"-18
47	43081	3	Washer, 5/16"
48	24285BL1	1	Plate, Mounting (L.H.)
49	24284BL1	1	Plate, Mounting (R.H.)
50	R19172410	2	Washer, 1/2"
51	726-0178	4	Tie, Nylon
52	47810	6	Nut, Nylock Hex 5/16"-18
53	43682	2	Carriage Bolt, 5/16"-18 x 1-1/4"
54	44695	2	Washer, Bowed
55	44062	2	Pin, Clevis 1/2" x 1"
56	24807	2	Trunnion, Lift
57	HA21362	2	Nut, Nylock Hex 3/8"-16
58	42991	1	Plug
59	43010	2	Pin, 1/8" x 1-1/4"
60	1540-59	2	Washer, .52" x 1.062" x .09"

Parts

Repair Parts for Model 486.248374 42" Snow Thrower

To purchase repair parts, call the following toll-free number:
1-888-331-4569

This parts diagram is for the tractor frame mentioned on pages 5-9.



Ref.	Part No	Qty	Description
1	48883	2	Pulley, Flat 3-5/8"
2	43063	9	Hex Bolt, 5/16"-18 x 1"
3	43083	2	Hex Nut, 5/16"-18
4	43086	2	Lock Washer, 5/16"
5	43081	2	Washer, 5/16" Std. Wrt.
6	26943BL3	1	Frame, Clutch and Pulley
7	63904BL1	1	Idle Arm Assembly
8	24286	1	Spacer, Pivot
9	63762BL1	1	Idle Bracket Assembly
10	43015	5	Hex Nut, 3/8"-16
11	46981	1	Pulley, V Type 9"
12	43082	9	Nut, Hex Lock, 3/8"-16
13	46982	1	Pulley, V Type, 5-1/2"
14	27582	1	Shaft
15	42830	1	Spacer
16	42831	1	Spacer
17	43003	7	Lock Washer, 3/8"
18	42827	2	Key
19	42829	2	Bearing, Ball
20	27781BL1	1	Housing, Bearing
21	47810	9	Hex Nut, 5/16"-18 Nylock
22	43182	4	Hex Bolt, 5/16"-18 x 3/4"
23	44377	2	Hex Bolt, 3/8"-24 x 1"
24	42828	2	Washer
25	25722BL1	1	Brace Frame
26	46989	1	Belt, V Type Drive (55")
-	41353	1	Belt, V Type Drive (52") (Not shown)
27	42992	1	Belt, V Type Auger
28	47044	1	Pulley, V Type 4"
29	47025	1	Hex Bolt, 5/16"-18 x 3-1/2"
30	43432	3	Hex Bolt, 3/8"-16 x 2-1/2"
31	43054	3	Hex Bolt, 3/8"-16 x 2"
32	24571	1	Spacer
33	24472	1	Spacer, Pivot
34	43070	7	Washer, 3/8"
35	46959	2	Spring

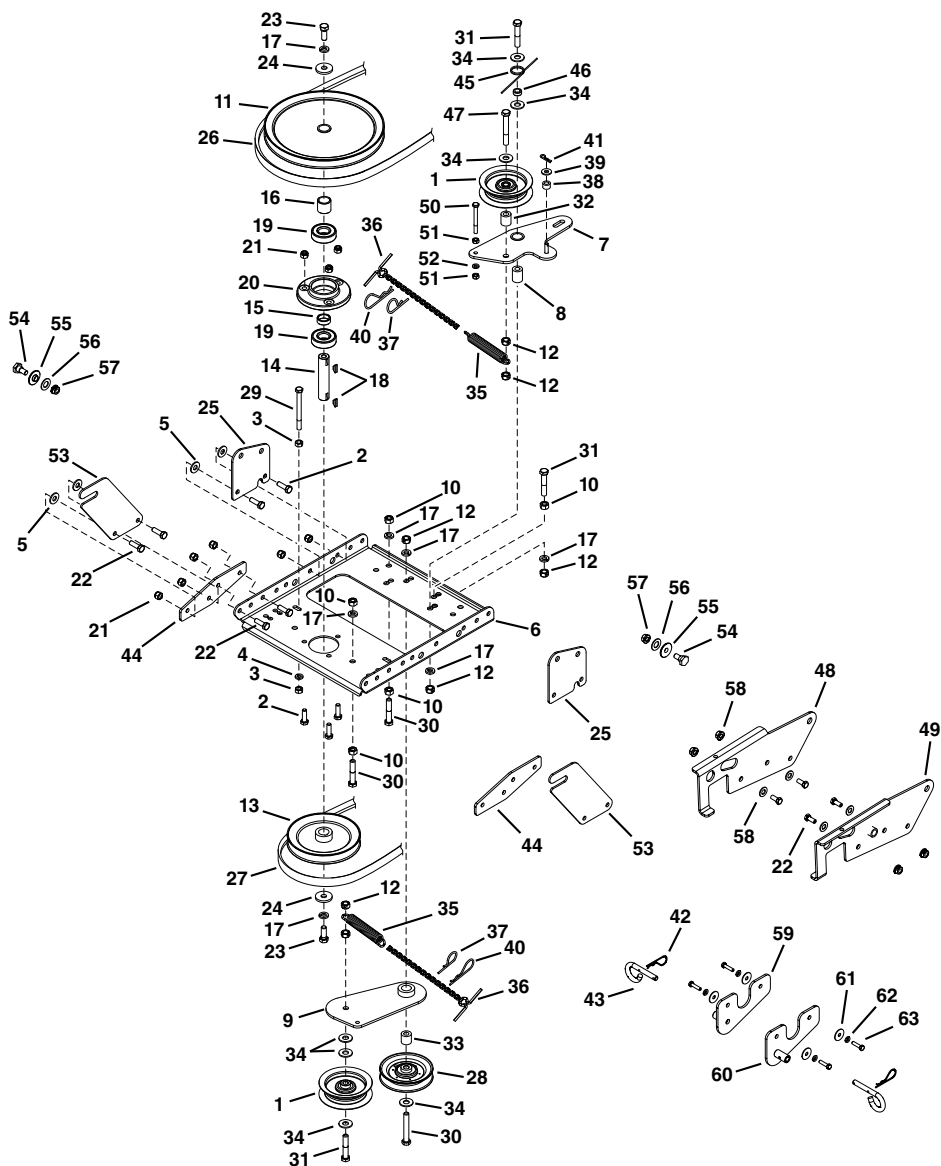
Ref.	Part No	Qty	Description
36	46963	2	Chain
37	43055	2	Pin, Hair Cotter, 3/32"
38	23727	1	Spacer
39	43088	1	Washer, 1/4"
40	43343	2	Pin, Hair Cotter #4 (1/8")
41	HA3090	2	Pin, Hair Cotter 5/64"
42	43038	2	Pin, Pivot Lock 3/8 X 1-1/2
43	43086	2	Washer, Loc 5/16
44	41352BL1	2	Tube, Support
45	47607	1	Spring, Torsion
46	23625	1	Spacer
47	43509	1	Hex Bolt, 3/8"-16 x 2-2/4" Lg.
48	R19172410	2	Washer, .531 X 1.5 X .134
49	43343	2	Pin, Hair Cotter 3/32 X 2-5/1
50	49870	1	Hex Bolt, 1/4"-20 x 2-1/2"
51	43178	2	Hex Nut, 1/4"-20
52	43177	1	Lock Washer, 1/4"
53	27011BL1	1	Bracket, Front Frame LH
54	27010BL1	1	Bracket, Front Frame RH
55	67267BL1	1	Ass'y, Rear Mtg Brkt LH
56	67266BL1	1	Ass'y, Rear Mtg Brkt RH
57	47134	4	Pin, Hair Cotter .08 X 1.58
58	43020	2	Bolt, Hex 1/2-13 X 1-1/2 GR5
59	27231	2	Spacer, .530 ID X .750 X .50
60	41657	4	Nut, Hex 1/2-13 Nyloc
61	43019	4	Nut, Hex 1/2-13 Jam
62	41346	2	Link, Support
63	R19171616	4	Washer, .531 X 1 X .059
64	67269BL1	1	Ass'y, Front Mtg Plate LH
65	67268BL1	1	Ass'y, Front Mtg Plate RH
66	42847	2	Pin, Quick Release 1/2" Dia
67	48106	2	Bolt, Shoulder
68	HA21362	2	Nut, Hex 3/8-16 Nyloc
69	43351	2	Bolt, Hex 1/2-13 X 1-1/4 Gr5
70	67053BL1	1	Hanger Bracket Assembly LH.
71	67052BL1	1	Hanger Bracket Assembly RH

Parts

Repair Parts for Model 486.248374 42" Snow Thrower

To purchase repair parts, call the following toll-free number:
1-888-331-4569

This parts diagram is for the tractor frame mentioned on pages 10-13.



Ref.	Part No	Qty	Description
1	48883	2	Pulley, Flat 3-5/8"
2	43063	9	Hex Bolt, 5/16"-18 x 1"
3	43083	2	Hex Nut, 5/16"-18
4	43086	2	Lock Washer, 5/16"
5	43081	20	Washer, 5/16" Std. Wrt.
6	26943BL3	1	Frame, Clutch and Pulley
7	63904BL1	1	Idler Arm Assembly
8	24286	1	Spacer, Pivot
9	63763BL1	1	Idler Bracket Assembly
10	43015	5	Hex Nut, 3/8"-16
11	46981	1	Pulley, V Type 9"
12	43082	9	Nut, Hex Lock, 3/8"-16
13	46982	1	Pulley, V Type, 5-1/2"
14	27582	1	Shaft
15	42830	1	Spacer
16	42831	1	Spacer
17	43003	7	Lock Washer, 3/8"
18	42827	2	Key
19	42829	2	Bearing, Ball
20	27781BL1	1	Housing, Bearing
21	47810	11	Hex Nut, 5/16"-18 Nylock
22	43182	8	Hex Bolt, 5/16"-18 x 3/4"
23	44377	2	Hex Bolt, 3/8"-24 x 1"
24	42828	2	Washer
25	27016BL1	2	Front Pulley Frame Bracket
26	46989	1	Belt, V Type Drive (55")
-	41353	1	Belt, V Type Drive (52") (Not shown)
27	42992	1	Belt, V Type Auger
28	47044	1	Pulley, V Type 4"
29	47025	1	Hex Bolt, 5/16"-18 x 3-1/2"
30	43432	3	Hex Bolt, 3/8"-16 x 2-1/2"
31	43054	3	Hex Bolt, 3/8"-16 x 2"
32	24571	1	Spacer
33	24472	1	Spacer, Pivot
34	43070	7	Washer, 3/8"

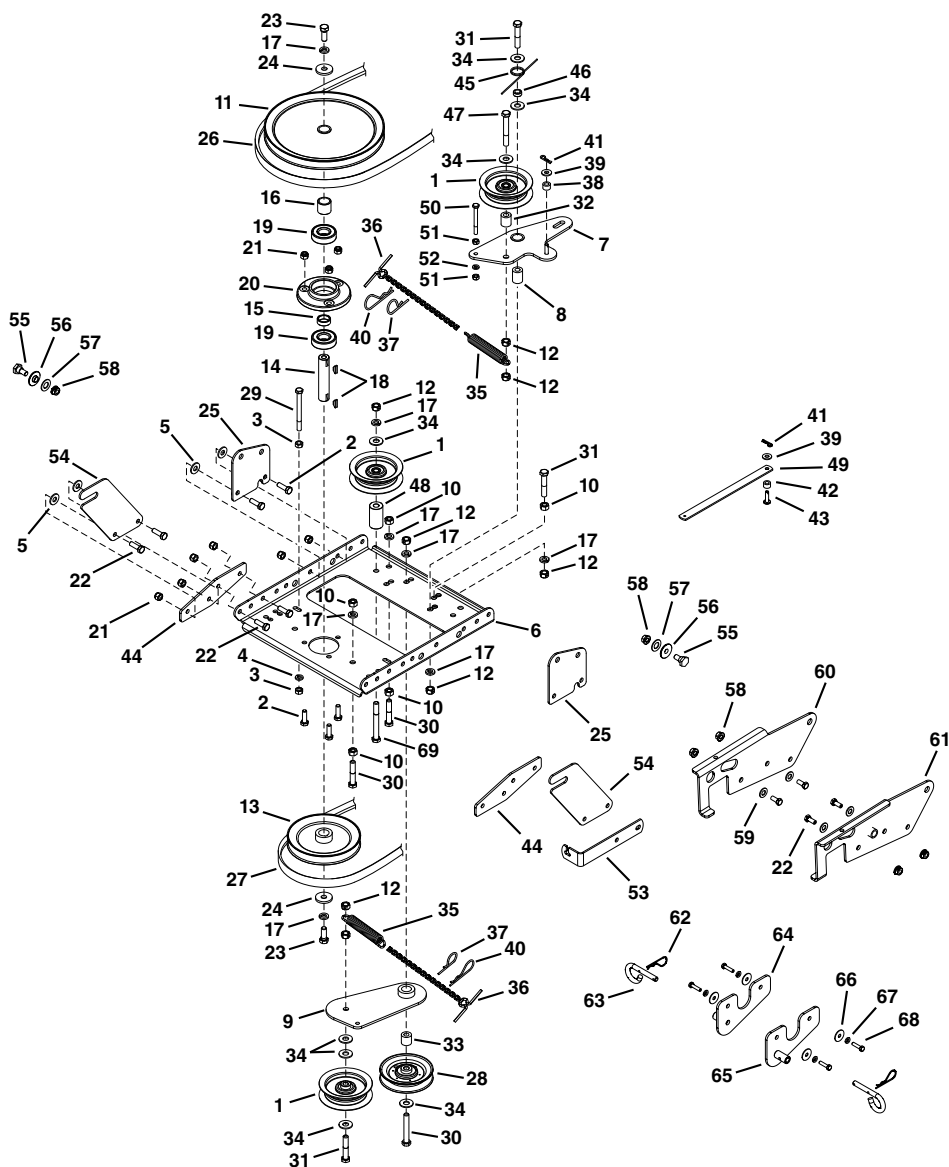
Ref.	Part No	Qty	Description
35	46959	2	Spring
36	46963	2	Chain
37	43055	2	Pin, Hair Cotter, 3/32"
38	23727	1	Spacer
39	43088	1	Washer, 1/4"
40	43343	2	Pin, Hair Cotter #4 (1/8")
41	HA3090	2	Pin, Hair Cotter 5/64"
42	43343	2	Pin, Hair Cotter 3/32 X 2-5/1
43	43038	2	Pin, Pivot Lock 3/8 X 1-1/2
44	27900BL3	2	Strap, Rear Mounting Ext.
45	47607	1	Spring, Torsion
46	23625	1	Spacer
47	43509	1	Hex Bolt, 3/8"-16 x 2-2/4" Lg.
48	27901BL3	1	Plate, Front Mtg LH
49	27902BL3	1	Plate, Front Mtg RH
50	49870	1	Hex Bolt, 1/4"-20 x 2-1/2"
51	43178	2	Hex Nut, 1/4"-20
52	43177	1	Lock Washer, 1/4"
53	25728BL1	2	Rear Pulley Frame Bracket
54	48106	2	Bolt, Shoulder
55	44685	2	Spacer, Shoulder
56	R19171616	2	Washer, .531 X 1 X .059
57	47572	6	Hex Lock Nut, 3/8"-16 Flanged
58	R19131316	4	Washer, .406 X .812 X .062
59	68402BL3	1	Ass'y, Hanger Brkt. RH
60	68403BL3	1	Ass'y, Hanger Brkt. LH
61	42977	4	Washer, .28 X 1.0 X .06
62	43177	4	Washer, Loc 1/4
63	42300	4	Bolt, Hex M6 X 1 X 25

Parts

Repair Parts for Model 486.248374 42" Snow Thrower

To purchase repair parts, call the following toll-free number:
1-888-331-4569

This parts diagram is for the tractor frame mentioned on pages 10 and 14-16.



Ref.	Part No	Qty	Description
1	48883	3	Pulley, Flat 3-5/8"
2	43063	9	Hex Bolt, 5/16-18 x 1"
3	43083	2	Hex Nut, 5/16"-18
4	43086	2	Lock Washer, 5/16"
5	43081	20	Washer, 5/16" Std. Wrt.
6	26943BL3	1	Frame, Clutch and Pulley
7	63904BL1	1	Idler Arm Assembly
8	24286	1	Spacer, Pivot
9	63762BL1	1	Idler Bracket Assembly
10	43015	5	Hex Nut, 3/8"-16
11	46981	1	Pulley, V Type 9"
12	43082	10	Nut, Hex Lock, 3/8"-16
13	46982	1	Pulley, V Type, 5-1/2"
14	27582	1	Shaft
15	42830	1	Spacer
16	42831	1	Spacer
17	43003	8	Lock Washer, 3/8"
18	42827	2	Key
19	42829	2	Bearing, Ball
20	27781BL1	1	Housing, Bearing
21	47810	11	Hex Nut, 5/16"-18 Nylock
22	43182	8	Hex Bolt, 5/16"-18 x 3/4"
23	44377	2	Hex Bolt, 3/8"-24 x 1"
24	42828	2	Washer
25	27016BL1	2	Front Pulley Frame Bracket
26	46989	1	Belt, V Type Drive (55")
-	41353	1	Belt, V Type Drive (52") (Not shown)
27	42992	1	Belt, V Type Auger
28	47044	1	Pulley, V Type 4"
29	47025	1	Hex Bolt, 5/16"-18 x 3-1/2"
30	43432	3	Hex Bolt, 3/8"-16 x 2-1/2"
31	43054	3	Hex Bolt, 3/8"-16 x 2"
32	24571	1	Spacer
33	24472	1	Spacer, Pivot
34	43070	8	Washer, 3/8"
35	46959	2	Spring
36	46963	2	Chain
37	43055	2	Pin, Hair Cotter, 3/32"

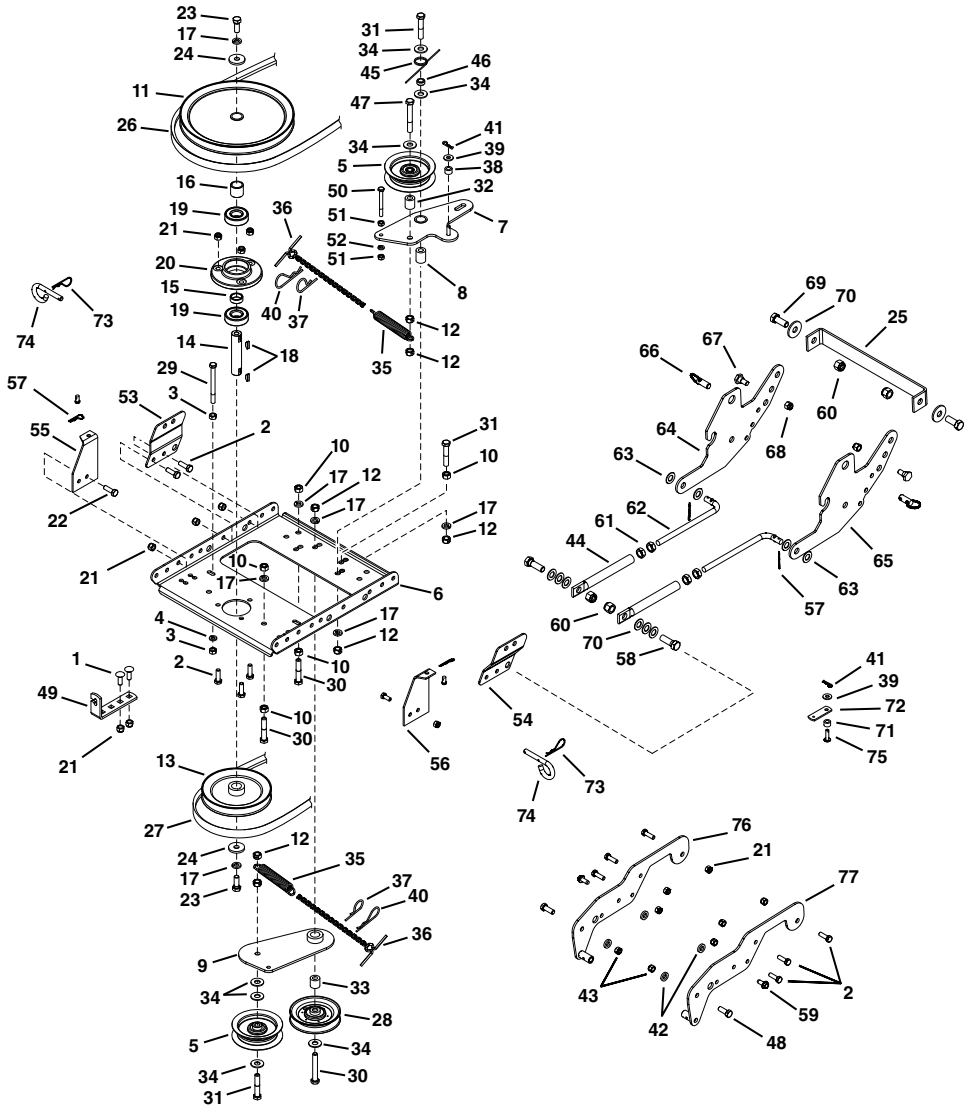
Ref.	Part No	Qty	Description
38	23727	1	Spacer
39	43088	2	Washer, 1/4"
40	43343	2	Pin, Hair Cotter #4 (1/8")
41	HA3090	3	Pin, Hair Cotter 5/64"
42	23727	1	Spacer, .310 ID X .560 OD X .36
43	63904BL1	1	Ass'y, Idler Arm (Wldm)
44	27900BL3	2	Strap, Rear Mounting Ext.
45	47607	1	Spring, Torsion
46	23625	1	Spacer
47	43509	1	Hex Bolt, 3/8"-16 x 2-2/4" Lg.
48	25780	1	Spacer
49	28414BL3	1	Strap, Cable
50	49870	1	Hex Bolt, 1/4"-20 x 2-1/2"
51	43178	2	Hex Nut, 1/4"-20
52	43177	1	Lock Washer, 1/4"
53	28413BL3	1	Bracket, Cable
54	25728BL1	2	Rear Pulley Frame Bracket
55	48106	2	Bolt, Shoulder
56	44685	2	Spacer, Shoulder
57	R19171616	2	Washer, .531 X 1 X .059
58	47572	6	Hex Lock Nut, 3/8"-16 Flanged
59	R19131316	4	Washer, .406 X .812 X .062
60	27901BL3	1	Plate, Front Mtg LH
61	27902BL3	1	Plate, Front Mtg RH
62	43343	2	Pin, Hair Cotter 3/32 X 2-5/1
63	43038	2	Pin, Pivot Lock 3/8 X 1-1/2
64	68402BL3	1	Ass'y, Hanger Brkt. RH
65	68403BL3	1	Ass'y, Hanger Brkt. LH
66	42977	4	Washer, .28 X 1.0 X .06
67	43177	4	Washer, Loc 1/4
68	42300	4	Bolt, Hex M6 X 1 X 25
69	46938	1	Hex Bolt, 3/8"-16 X 3-1/4"

Parts

Repair Parts for Model 486.248374 42" Snow Thrower

To purchase repair parts, call the following toll-free number:
1-888-331-4569

This parts diagram is for the tractor frame mentioned on
pages 17-21.



Ref.	Part No	Qty	Description
1	43080	2	Carriage Bolt, 5/16"-18 x 3/4"
2	43063	13	Hex Bolt, 5/16-18 x 1"
3	43083	2	Hex Nut, 5/16"-18
4	43086	2	Lock Washer, 5/16"

Ref.	Part No	Qty	Description
5	48883	2	Pulley, Flat 3-5/8"
6	26943BL3	1	Frame, Clutch and Pulley
7	63904BL1	1	Idler Arm Assembly
8	24286	1	Spacer, Pivot

Ref.	Part No	Qty	Description
9	63762BL1	1	Idler Bracket Assembly
10	43015	5	Hex Nut, 3/8"-16
11	46981	1	Pulley, V Type 9"
12	43082	9	Nut, Hex Lock, 3/8"-16
13	46982	1	Pulley, V Type, 5-1/2"
14	27582	1	Shaft
15	42830	1	Spacer
16	42831	1	Spacer
17	43003	7	Lock Washer, 3/8"
18	42827	2	Key
19	42829	2	Bearing, Ball
20	27781BL1	1	Housing, Bearing
21	47810	15	Hex Nut, 5/16"-18 Nylock
22	43182	4	Hex Bolt, 5/16"-18 x 3/4"
23	44377	2	Hex Bolt, 3/8"-24 x 1"
24	42828	2	Washer
25	25722BL1	1	Brace Frame
26	46989	1	Belt, V Type Drive (55")
-	41353	1	Belt, V Type Drive (52") (Not shown)
27	42992	1	Belt, V Type Auger
28	47044	1	Pulley, V Type 4"
29	47025	1	Hex Bolt, 5/16"-18 x 3-1/2"
30	43432	3	Hex Bolt, 3/8"-16 x 2-1/2"
31	43054	3	Hex Bolt, 3/8"-16 x 2"
32	24571	1	Spacer
33	24472	1	Spacer, Pivot
34	43070	7	Washer, 3/8"
35	46959	2	Spring
36	46963	2	Chain
37	43055	2	Pin, Hair Cotter, 3/32"
38	23727	1	Spacer
39	43088	2	Washer, 1/4"
40	43343	2	Pin, Hair Cotter #4 (1/8")
41	HA3090	3	Pin, Hair Cotter 5/64"
42	42846	4	Bushing, Pivot (Skid)
43	HA21362	2	Nut, Hex 3/8-16 Nyloc
44	41352BL1	2	Tube, Support
45	47607	1	Spring, Torsion

Ref.	Part No	Qty	Description
46	23625	1	Spacer
47	43509	1	Hex Bolt, 3/8"-16 x 2-2/4" Lg.
48	43001	2	Bolt, Hex 3/8-16 X 1 GT5
49	24558BL1	1	Cable Mount Bracket
50	49870	1	Hex Bolt, 1/4"-20 x 2-1/2"
51	43178	2	Hex Nut, 1/4"-20
52	43177	1	Lock Washer, 1/4"
53	27011BL1	1	Bracket, Front Frame LH
54	27010BL1	1	Bracket, Front Frame RH
55	67267BL1	1	Ass'y, Rear Mtg Brkt LH
56	67266BL1	1	Ass'y, Rear Mtg Brkt RH
57	47134	4	Pin, Hair Cotter .08 X 1.58
58	43020	2	Bolt, Hex 1/2-13 X 1-1/2 GR5
59	47630	2	Bolt, Hex 5/16-18 X 3/4 St WH
60	41657	4	Nut, Hex 1/2-13 Nyloc
61	43019	4	Nut, Hex 1/2-13 Jam
62	41346	2	Link, Support
63	R19171616	4	Washer, .531 X 1 X .059
64	67269BL1	1	Ass'y, Front Mtg Plate LH
65	67268BL1	1	Ass'y, Front Mtg Plate RH
66	42847	2	Pin, Quick Release 1/2" Dia
67	48106	2	Bolt, Shoulder
68	HA21362	2	Nut, Hex 3/8-16 Nyloc
69	43351	2	Bolt, Hex 1/2-13 X 1-1/4 Gr5
70	R19172410	8	Washer, .531 X 1.5 X .134
71	23727	1	Spacer, .310 ID X .560 OD X .36
72	27340BL1		Strap, Clutch Cable Extension
73	43343	2	Pin, Hair Cotter 3/32 X 2-5/1
74	43038	2	Pin, Pivot Lock 3/8 X 1-1/2
75	63904BL1	1	Ass'y, Idler Arm (Wldm)
76	67533BL1	1	Ass'y, Frame Support LH
77	67532BL1	1	Ass'y, Frame Support RH

CRAFTSMAN®

is a registered trademark of Stanley Black & Decker, Inc., used under license.

© 2023 CRAFTSMAN

Product Manufactured by:

Agri-Fab®, Inc.
809 South Hamilton Street
Sullivan, Illinois 61951
USA
U.S. & Canada Only