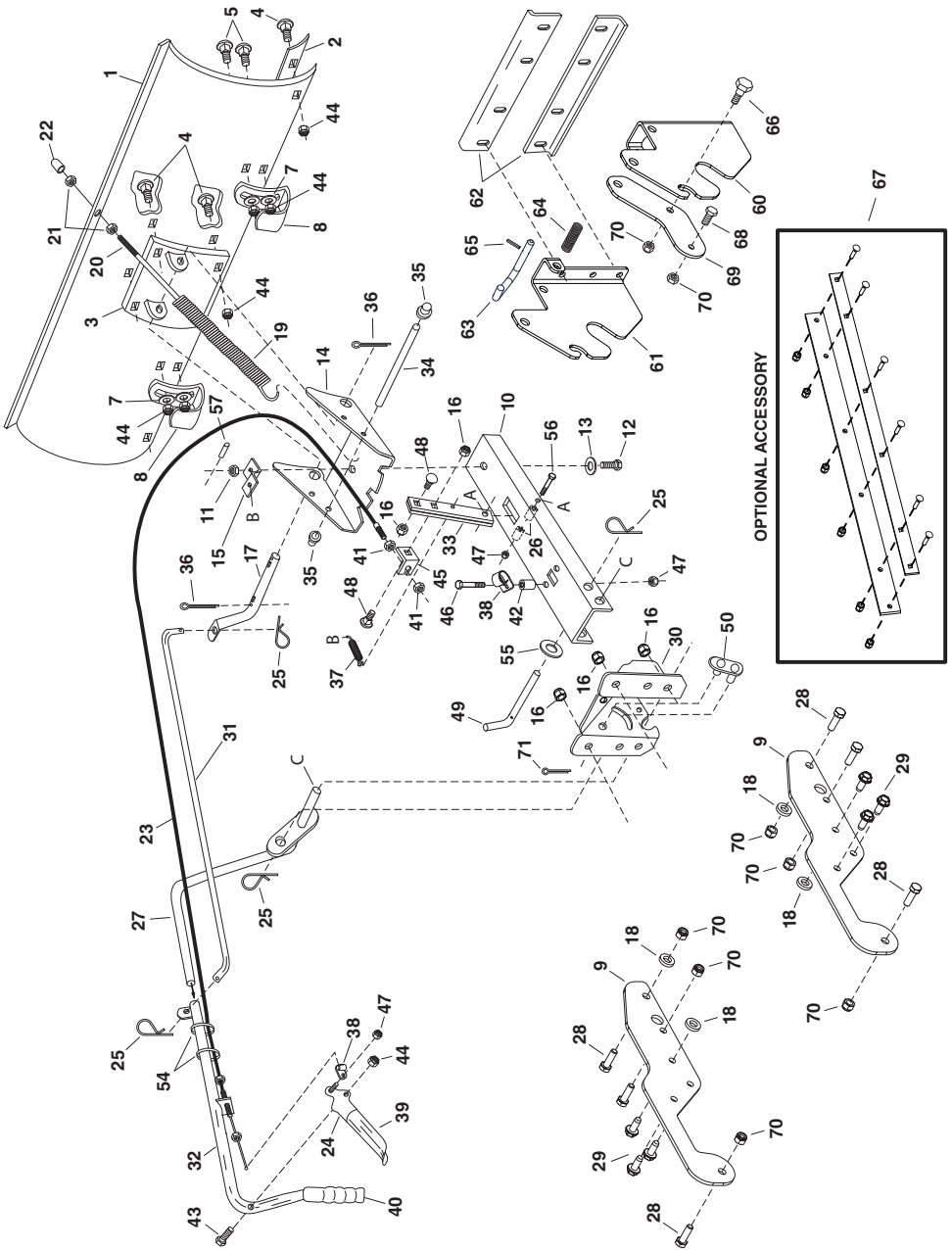


42" SNOW BLADE
CMXGZBF7124481



REF.	PART NO.	QTY.	DESCRIPTION	REF.	PART NO.	QTY.	DESCRIPTION
1	23114BL3	1	Blade 42"	38	48084	2	Cable End Fitting
2	23117RD2	1	Wear Plate 42"	39	48083	1	Grip, Plastic
3	62980BL1	1	Reinforcement Plate Assembly	40	46471	1	Handle, Grip
4	43080	6	Bolt, Carriage 5/16-18 x 3/4"	41	712-0256	2	Hex Jam Nut, 5/16-24 Thread
5	44326	4	Bolt, Carriage 5/16-18 x 1"	42	23658	1	Spacer
7	43081	4	Washer, 5/16"	43	43085	1	Hex Bolt, 5/16-18 x 1-1/2"
8	24690BL1	2	Skid Shoe	44	47810	8	Nylock Hex Nut, 5/16"
9	2-451BL1	2	Bracket, Frame	45	24780	1	Cable Mount Bracket
10	24347BL1	1	Push Channel	46	43648	1	Hex Bolt, 1/4-20 x 1-1/2"
11	43262	1	Hex Lock Nut, 1/2-13 Thread	47	47189	3	Nylock Hex Nut, 1/4"
12	23131	1	Bolt, Special Pivot	48	4-30	2	Carriage Bolt, 3/8-16 x 1-1/4"
13	1540-118	1	Washer, Flat 1/2"	49	46065	1	Channel Pivot Pin
14	2-1467BL1	1	Plate, Pivot 7 Ga.	50	69440	1	Lift Link Assembly
15	23130	1	Bracket, Spring Mt.	51	43001	8	Hex Bolt, 3/8-16 x 1"
16	HA21362	10	Nylock Hex Nut, 3/8"	52	—	—	—
17	46066BL1	1	Shaft, Blade Pivot	53	—	—	—
18	42846	4	Bushing, Pivot (SKID)	54	726-0178	2	Plastic Tie
19	48090	1	Spring, Blade Adjust	55	R19171616	1	Washer
20	44071	1	Hex Bolt, 3/8-16 x 3-1/2"	56	46071	1	Hex Bolt, 1/4-20 x 3-1/4" Lg. Gr 5
21	43015	2	Hex Nut, 3/8-16 Thread	57	43349	1	1/4" x 1" Spring Pin
22	44074	1	Plastic Cap	58	—	—	—
23	49808	1	Control Cable Assembly	59	—	—	—
24	62561BL1	1	Release Grip Assembly (WLDM)	60	27352BL1	1	Hitch Bracket (RH)
25	43055	4	Pin, Hairpin Small 3/32"	61	27353BL1	1	Hitch Bracket (LH)
26	46053	2	Spacer, .28 ID x 1"	62	24520BL1	2	Angle Support Bracket
27	63033	1	Lift Handle Rod Assembly	63	40005	2	Attachment Pin
28	43063	6	Bolt, Hex 5/16-18 x 1 G5	64	732-3127	2	Compression Spring
29	47630	6	Bolt, Hex 5/16-18 x 3/4 ST WH	65	43659	2	Spring Pin, 3/16 x 1"
30	24023BL1	1	Pivot Support Bracket	66	48106	2	Shoulder Bolt, 3/8-16 x .9"
31	48167	1	Rod, Blade Pivot	67	66586	1	Rubber Blade Kit (not included)
32	65519BL3	1	Lift Handle Tube Assembly	68	43407	2	Hex Bolt, 3/8-16 x 3/4"
33	23151BL1	2	Angle Lock Bar	69	27864BL3	2	Blade Mount Bracket
34	23856P	1	Spring Mount Rod (PLT)	70	43082	4	Lock Nut, 3/8"
35	44917	2	Palnut, 3/8"	71	142	1	Pin, Cotter 1/8 x 3/4"
36	43010	2	Cotter Pin 1/8" x 1-1/4"		45891	1	Owners Manual
37	43348	1	Angle Lock Spring				