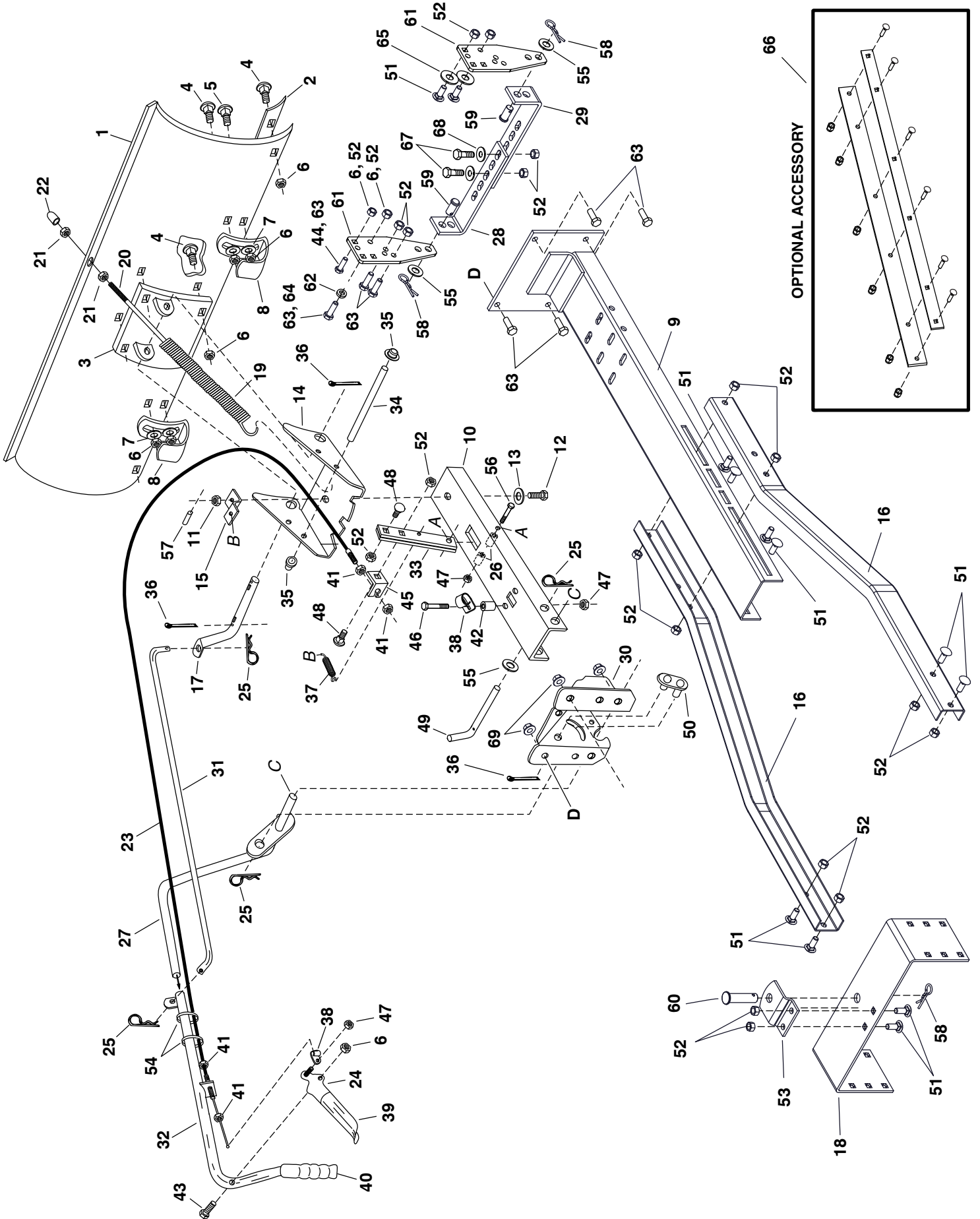


REPAIR PARTS LIST FOR MODEL LBD48E 48" SNOW BLADE



REPAIR PARTS LIST FOR MODEL LBD48E 48" SNOW BLADE

REF. NO.	PART NO.	QTY.	DESCRIPTION	REF. NO.	PART NO.	QTY.	DESCRIPTION
1	23955	1	Blade 48"	36	43010	3	Cotter Pin 1/8" x 1-1/4"
2	23956	1	Wear Plate 48"	37	43348	1	Angle Lock Spring
3	62980	1	Reinforcement Plate Assembly	38	746-0260	2	Cable End Fitting
4	43080	6	Bolt, Carriage 5/16-18 x 3/4"	39	731-0869	1	Grip, Plastic
5	44326	4	Bolt, Carriage 5/16-18 x 1"	40	46471	1	Handle, Grip
6	47810	17	Nylon Lock Nut, 5/16-18	41	712-0256	2	Hex Jam Nut, 5/16-24
7	43081	4	Washer, 5/16"	42	23658	1	Spacer
8	24690	2	Skid Shoe	43	43085	1	Hex Bolt, 5/16-18 x 1-1/2"
9	64732	1	Thrust Channel	44	43063	4	Bolt, Hex 5/16-18 x 1"
10	24347	1	Push Channel	45	05762	1	Cable Mount Bracket
11	43262	1	Hex Lock Nut, 1/2-13	46	1509-90	1	Hex Bolt 1/4-20 x 1-1/4"
12	23131	1	Bolt, Special Pivot	47	47189	3	Nylon Lock Nut, 1/4-20
13	1540-118	1	Washer, Flat 1/2"	48	710-0305	4	Carriage Bolt, 3/8-16 x 1-1/4"
14	23958	1	Plate, Pivot 7 Ga.	49	46065	1	Channel Pivot Pin
15	23130	1	Bracket, Spring Mt.	50	63034	1	Lift Link Assembly
16	24659	2	Rear Support Channel	51	43350	12	Carriage Bolt, 3/8-16 x 1"
17	46066	1	Shaft, Blade Pivot	52	HA21362	20	Nylon Lock Nut, 3/8-16
18	25125	1	Rear Mounting Bracket	53	HA23380	1	Rear Locating Bracket
19	9466R	1	Spring, Blade Adjust	54	726-0178	2	Plastic Tie
20	44071	1	Hex Bolt, 3/8-16 x 3-1/2"	55	R19171616	3	Washer, 1/2" x 1" x .059" Thin
21	43015	2	Hex Nut, 3/8-16	56	46071	1	Hex Bolt, 1/4-20 x 3-1/4"
22	44074	1	Plastic Cap	57	43349	1	1/4" x 1" Spring Pin
23	49808	1	Control Cable Assembly	58	43343	3	Pin, 3/32" Hairpin (Large)
24	62561	1	Release Grip Assembly	59	44062	2	Clevis Pin, 1/2" x 1" Lg.
25	43055	4	Pin, Hairpin Small 3/32"	60	HA3980	1	Clevis Pin, 5/8" x 1-3/4" Lg.
26	46053	2	Spacer, .28 ID x 1"	61	25124	2	Frame Bracket
27	63033	1	Lift Handle Rod Assembly	62	43003	2	Lock Washer, 3/8"
28	25121	1	Short Hanger Bracket	63	43001	8	Hex Bolt, 3/8-16 x 1"
29	25122	1	Long Hanger Bracket	64	47630	2	Hex Bolt, 5/16-18 x 3/4" Self Thd
30	24023	1	Pivot Support Bracket	65	R19172410	4	Washer, 1/2" x 1-1/2" x .134"
31	48167	1	Rod, Blade Pivot	66	66754	1	Rubber Blade Kit (not included)
32	65519	1	Lift Handle Tube Assembly	67	43087	2	Hex Bolt, 3/8 x 1-1/4"
33	23151	2	Angle Lock Bar	68	43070	2	Washer, 3/8"
34	23856	1	Spring Mount Rod	69	47572	4	Flanged Lock Nut, 3/8-16
35	44917	2	Pinnut, 3/8"		41860	1	Owners Manual