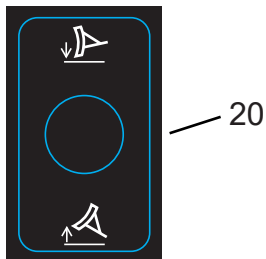
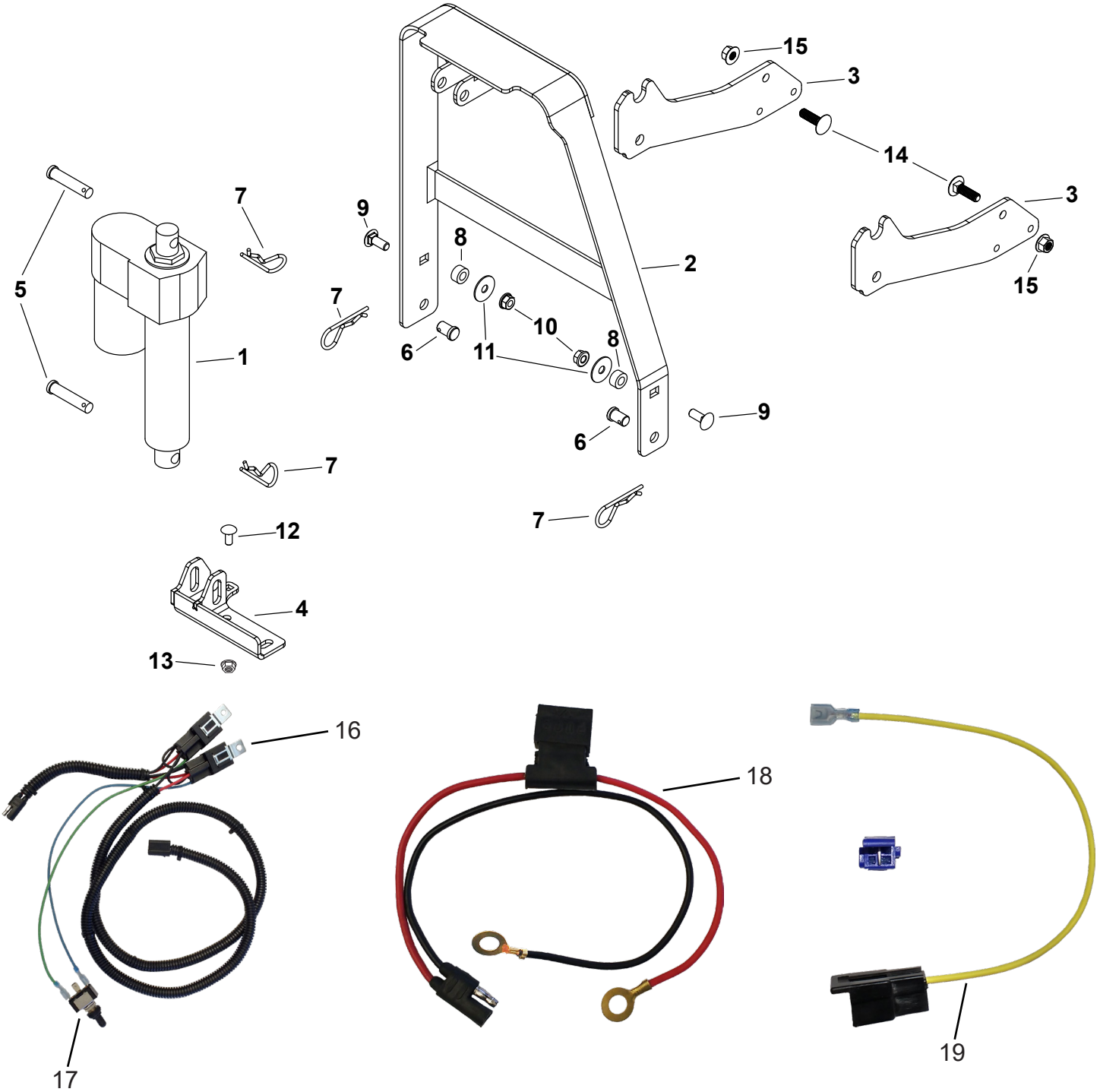


LP68150 - ELECTRIC LIFT KIT-100/S240-700AM



Parts not shown to scale

02/11/2026

LP68150 - ELECTRIC LIFT KIT-100/S240-700AM

ITEM #	PART #	DESCRIPTION	QTY.
1	ST50225	4" ACTUATOR	1
2	6-1384BL3	A-FRAME	1
3	ST50716BL3	PLATE	2
4	ST50719BL3	LIFT BRACKET	1
5	ST50234	1/2" X 2" CLEVIS PIN	2
6	ST65195	1/2" X 1/2" CLEVIS PIN	2
7	714-0117	5/32" X 3" HAIR COTTER PIN	4
8	ST50720	3/4" OD SPACER	2
9	43350	3/8" X 1" CARRIAGE BOLT	2
10	44072	3/8" HEX WHIZ LOCK NUT	2
11	141	3/8" WASHER	2
12	43080	5/16" X 3/4" CARRIAGE BOLT	1
13	46584	5/16" HEX WHIZ LOCK NUT	1
14	ST65193	M10 X 35 MM SQUARE NECK CARRIAGE BOLTS	2
15	14M7296	M10 HEX FLANGE NUT	2
16	ST50574	RELAY HARNESS	1
17	ST50229	TOGGLE SWITCH SPDT	1
18	ST50129	BATTERY HARNESS W/ 30A FUSE	1
19	ST50572	100 SERIES POWER WIRE	1
20	ST50726	UP/DOWN LABEL	1
21	ST48295	PIMCH WARNING LABEL	1
22	ST50236	SWITCH BOOT	1
—	40699	6.25" PLASTIC TIE W/ # 8 SCREW HOLE	10
—	ST43314	PLASTIC WIRE HARNESS CLIP	2
—	3-413	OWNER'S MANUAL	1